

63712 Weingut „Hauser-Bühler“ - Hauptgebäude N

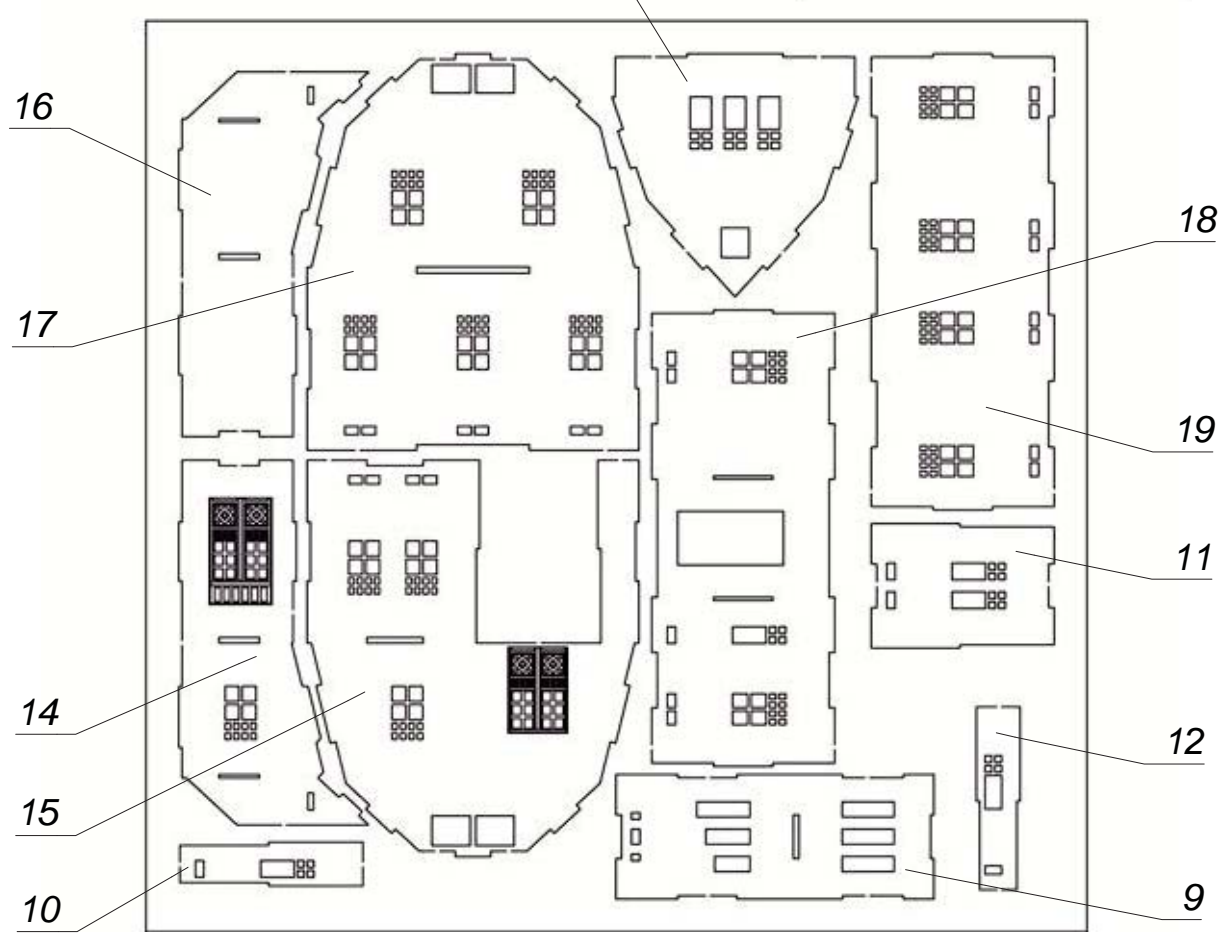
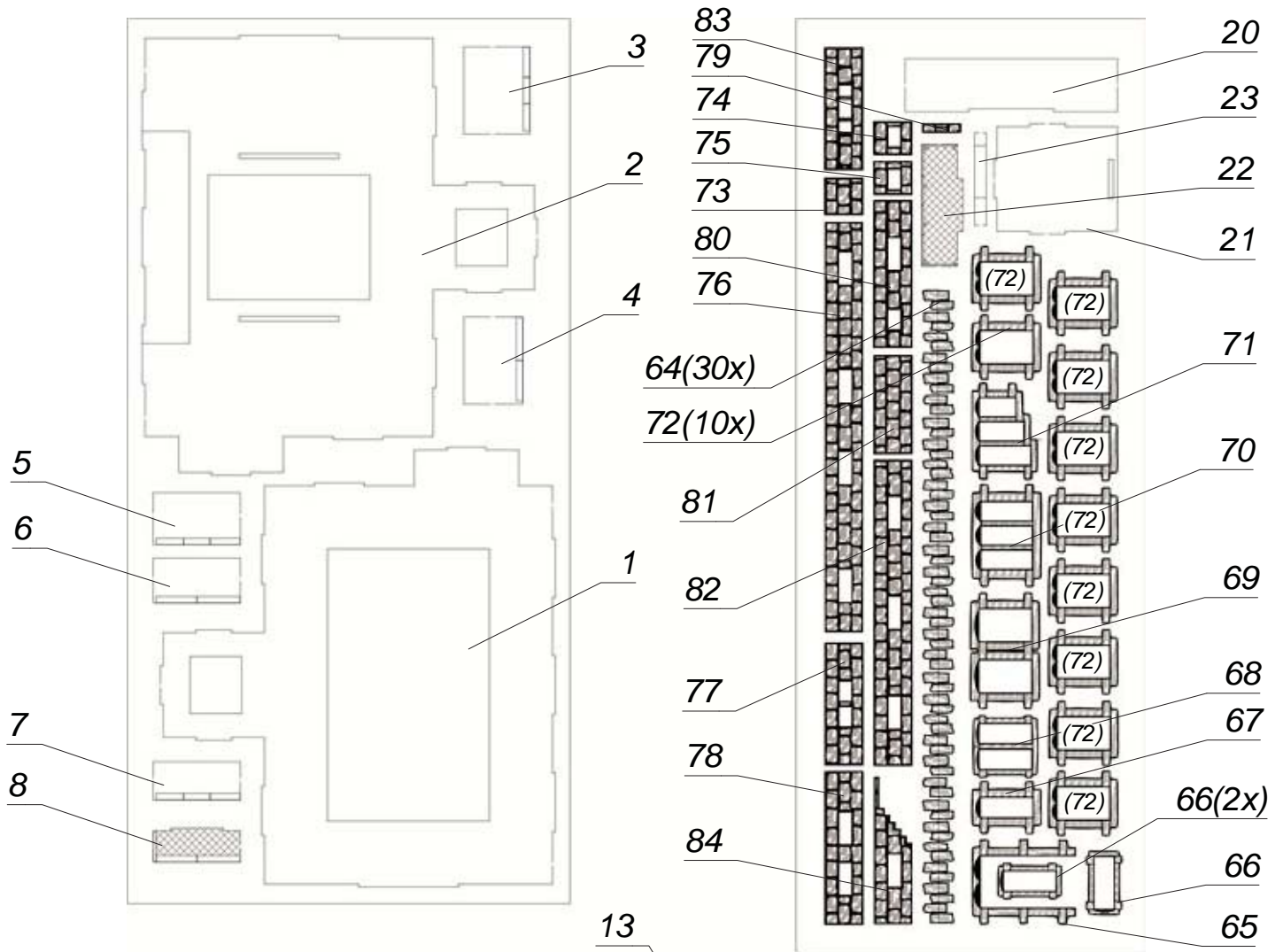
Winery "Hauser-Bühler"- Main Building N

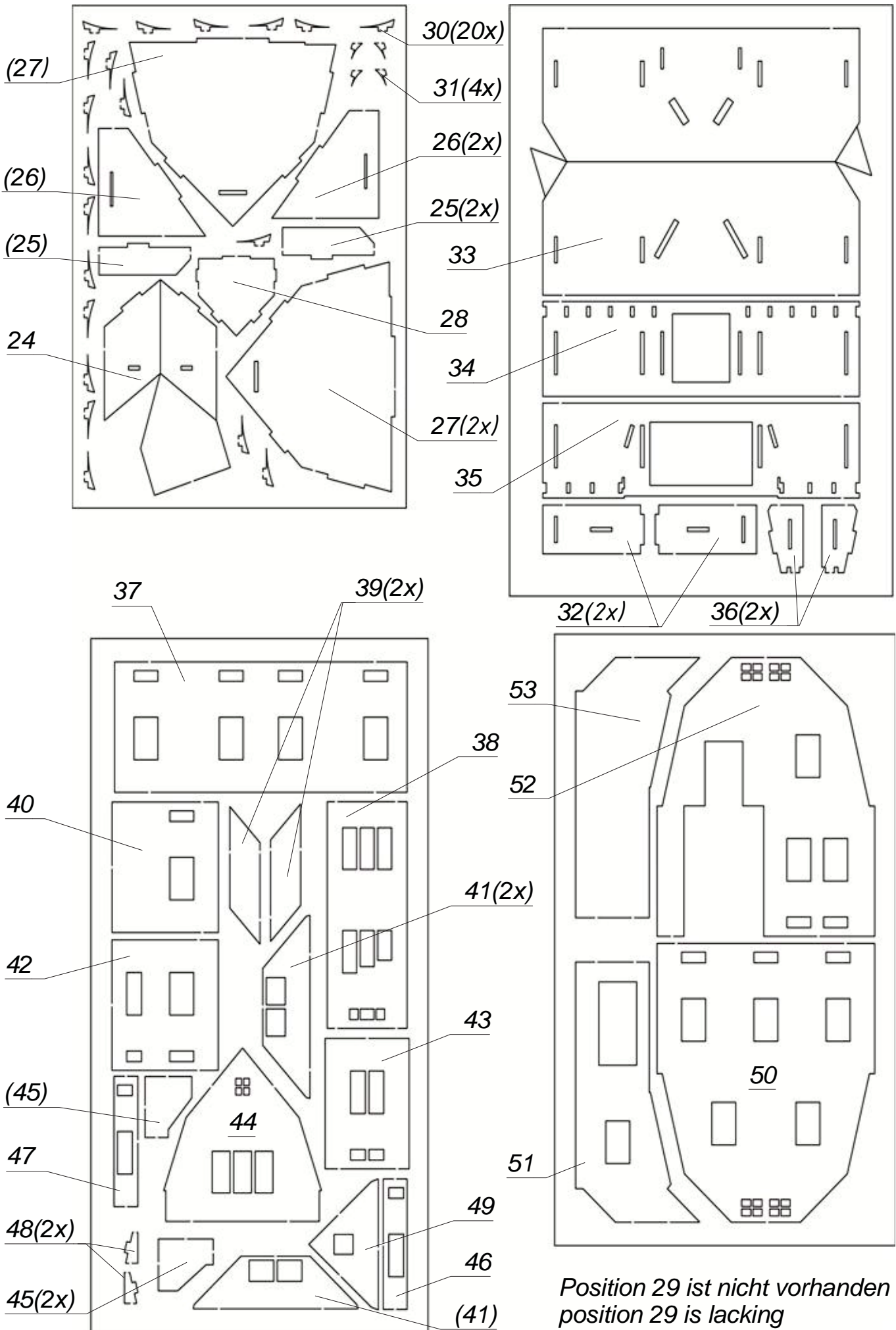
Domaine viticole "Hauser-Bühler" - bâtiment principal N

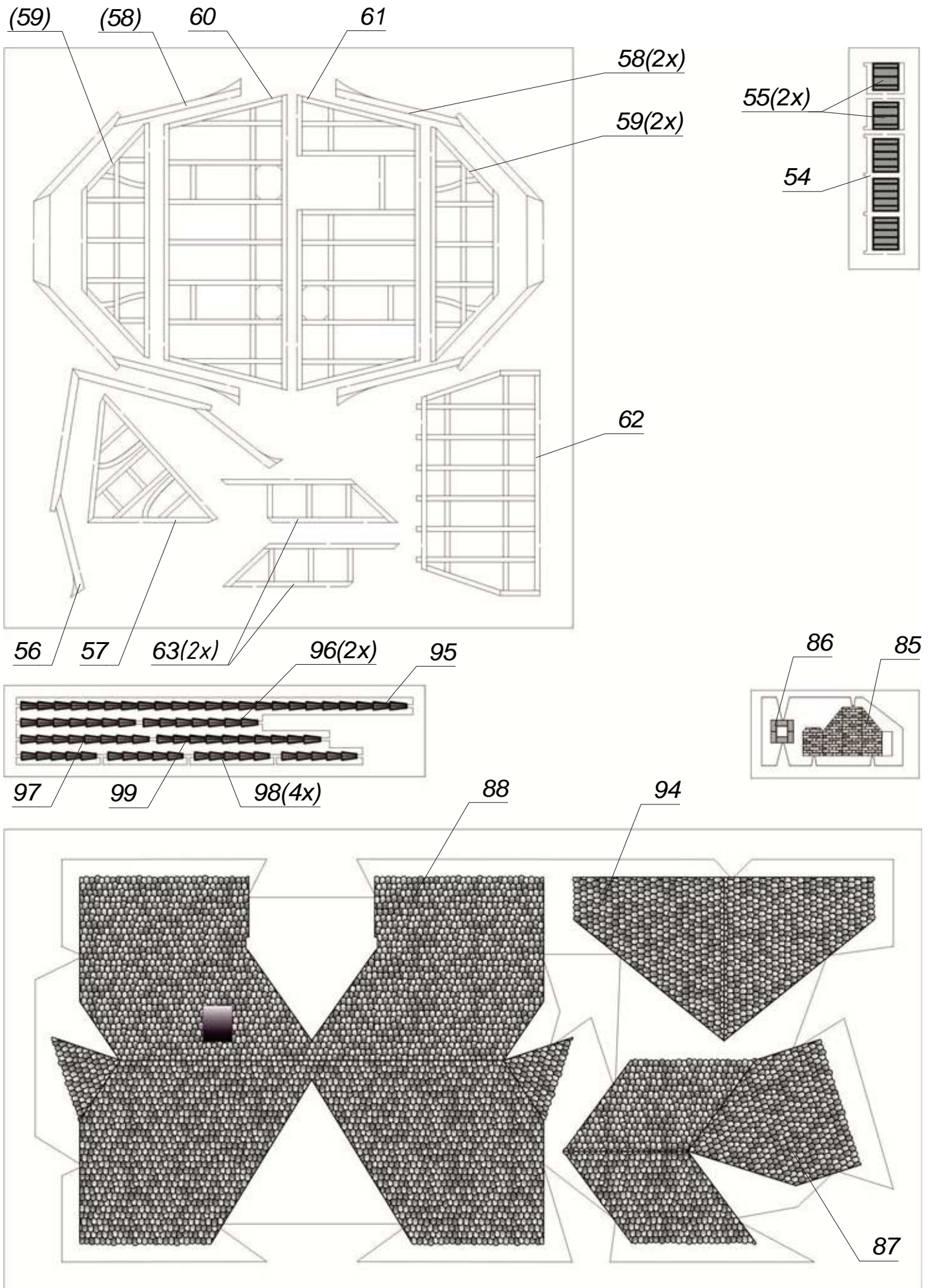
Propiedad vinícola "Hauser-Bühler" - casa principal N

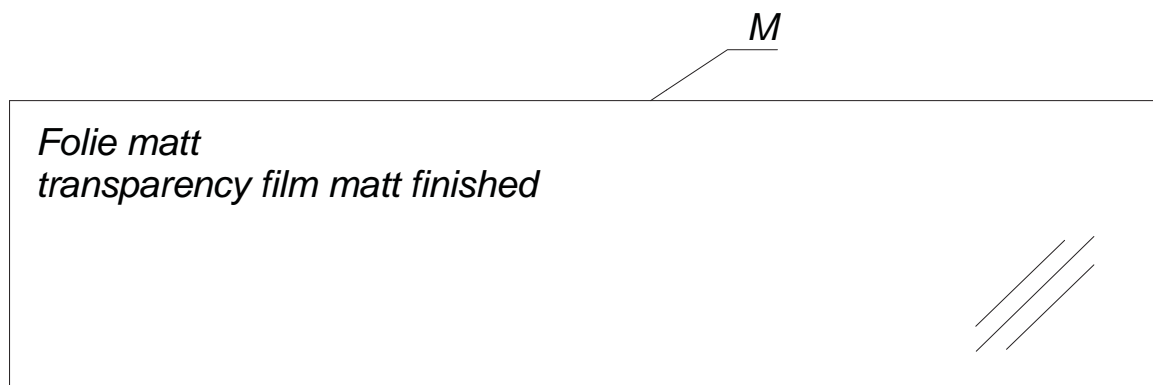
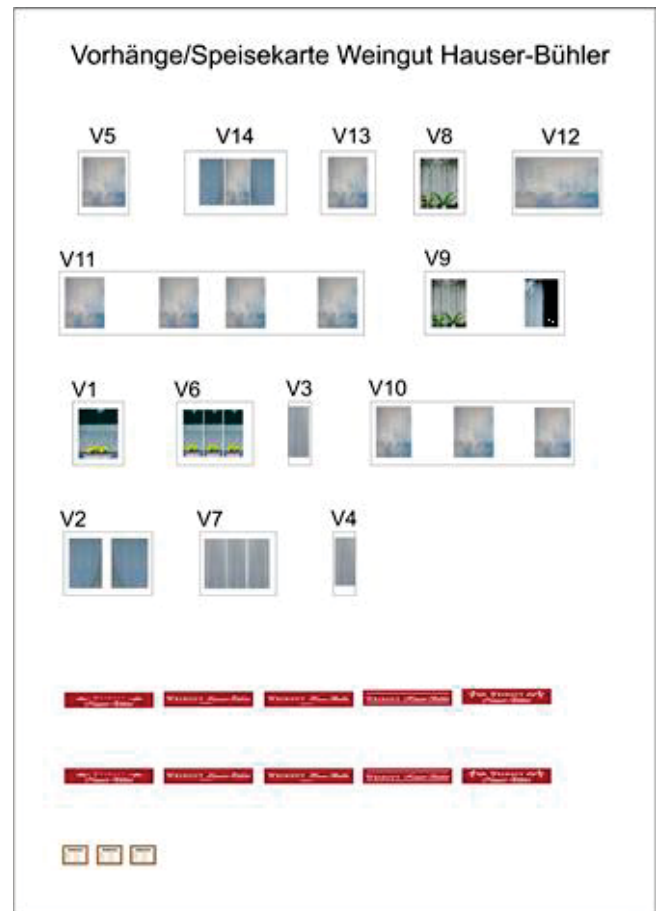
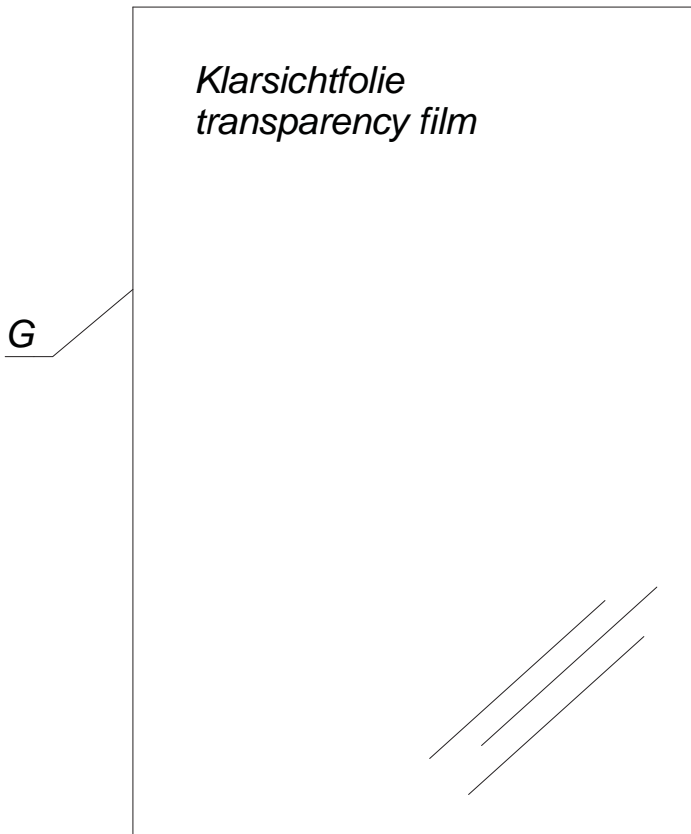
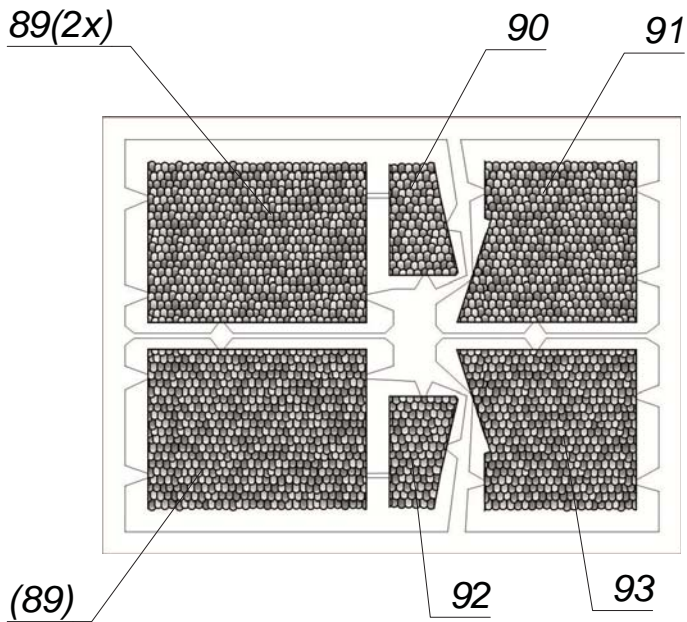
Wijnhuis "Hauser-Bühler" - hoofdgebouw N



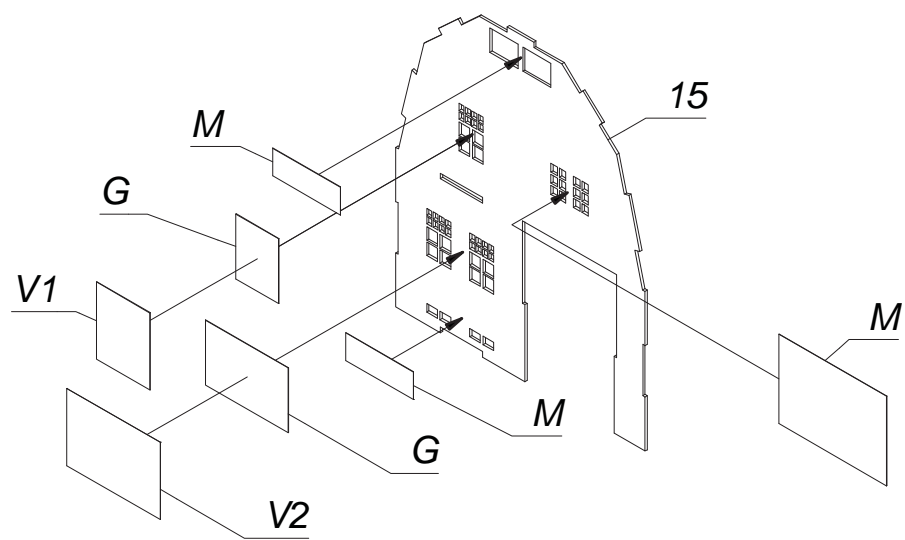




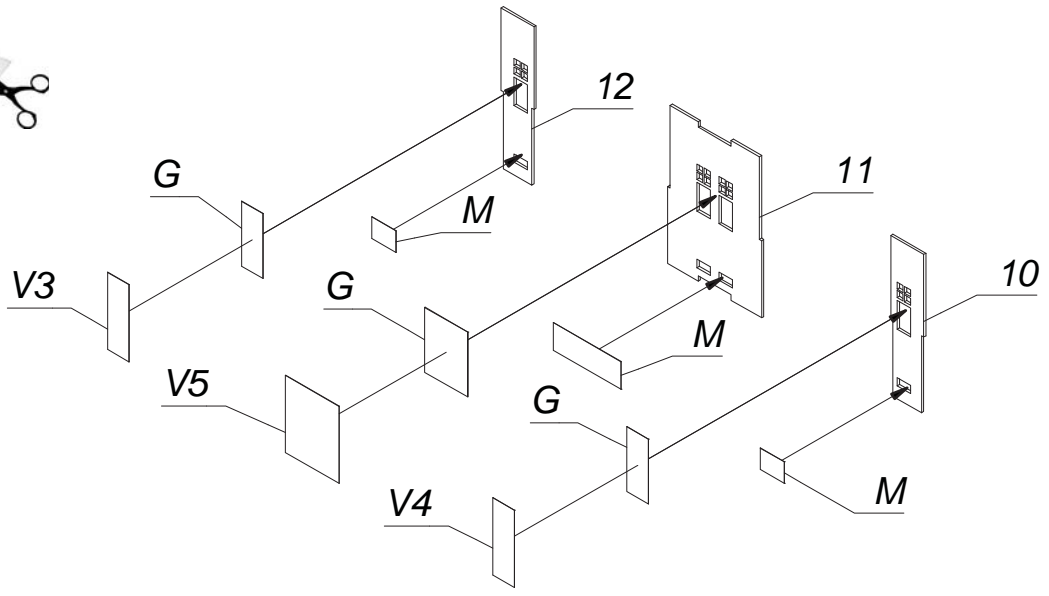




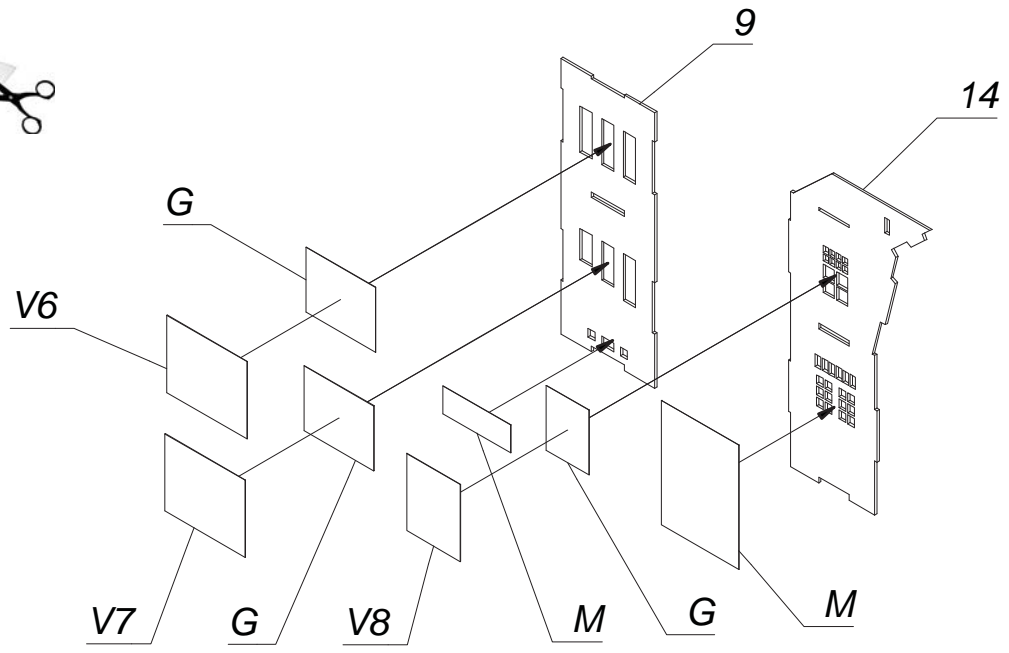
1.



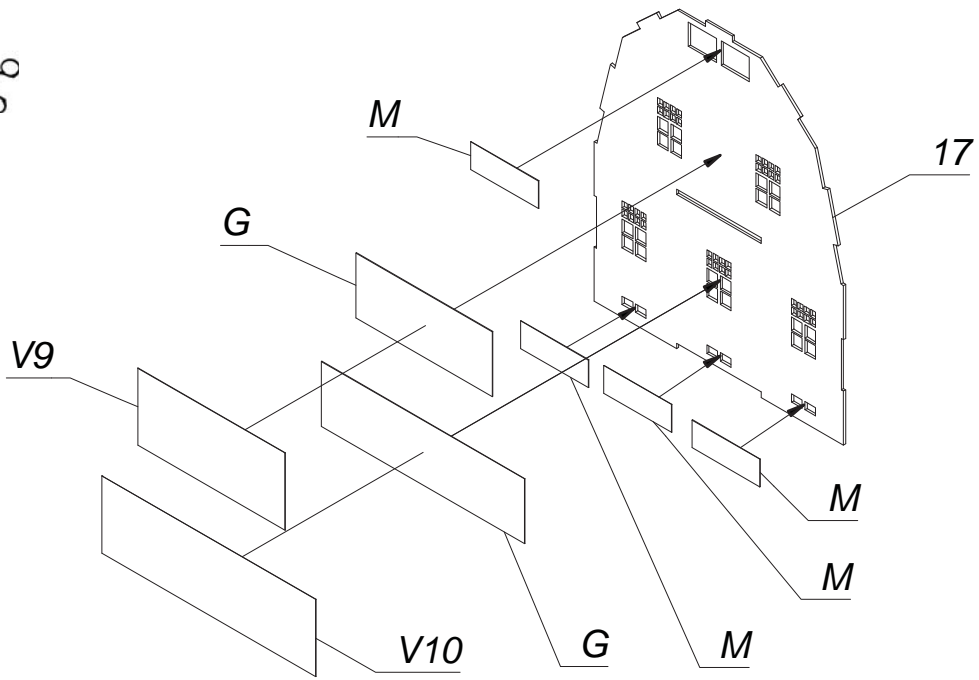
2.



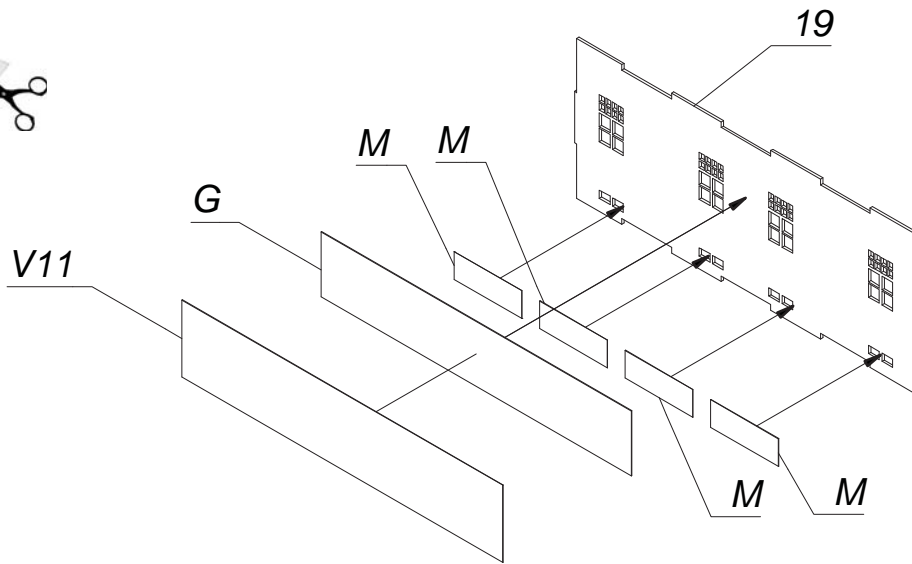
3.



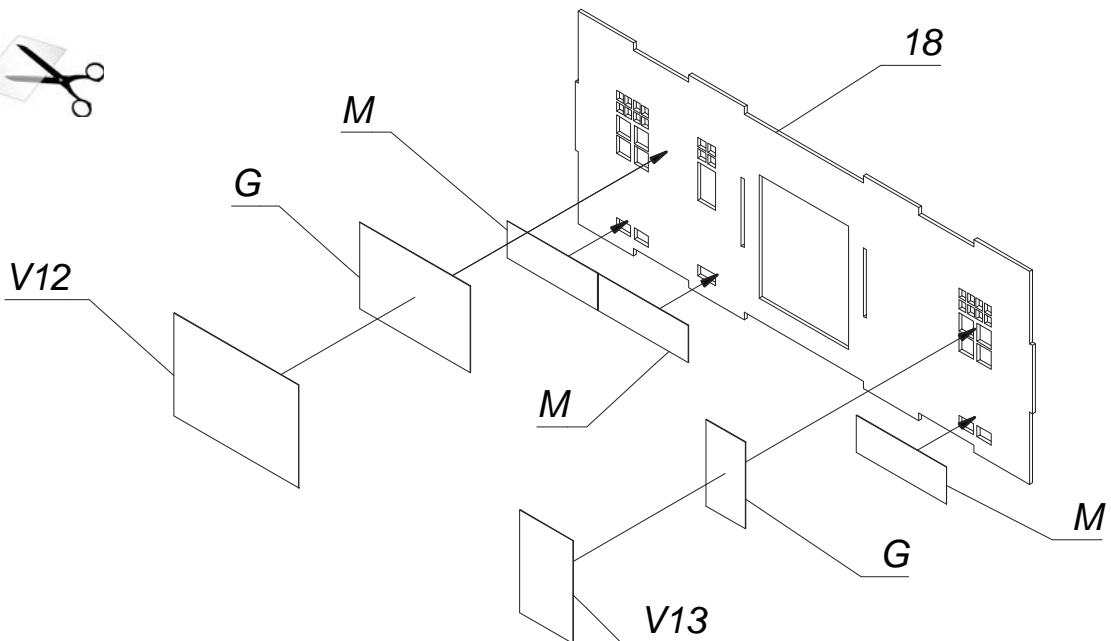
4.



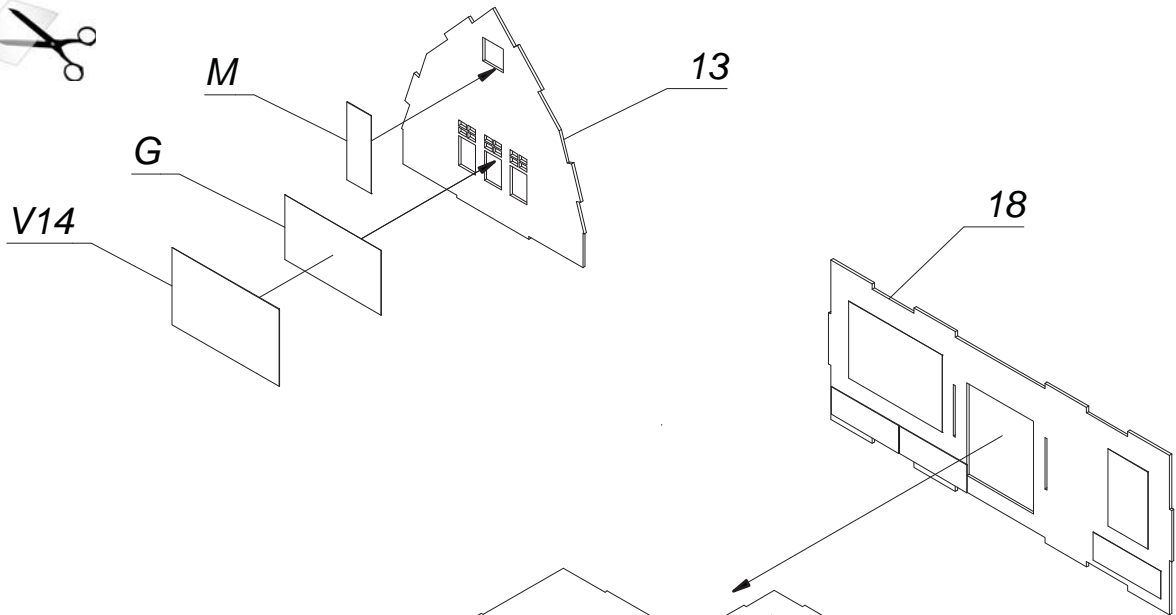
5.



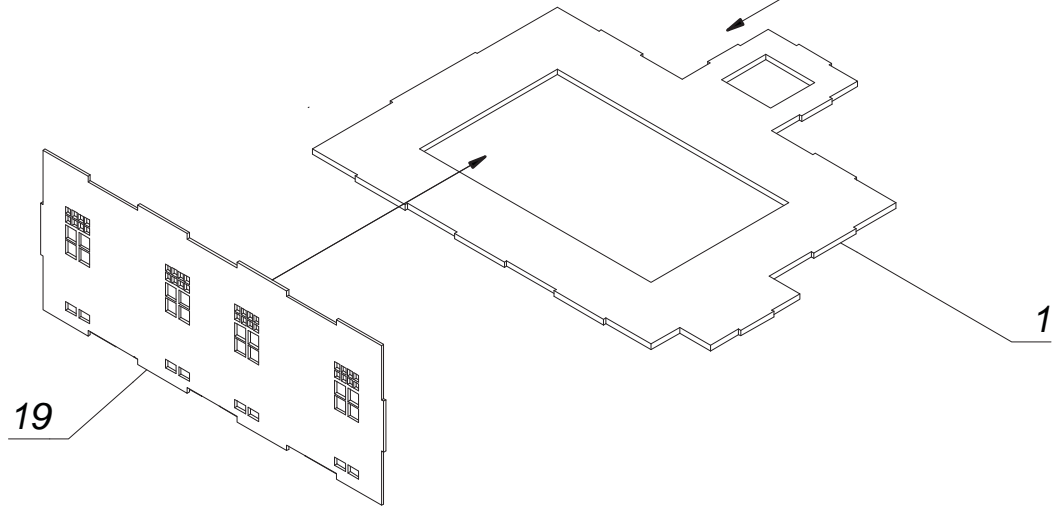
6.



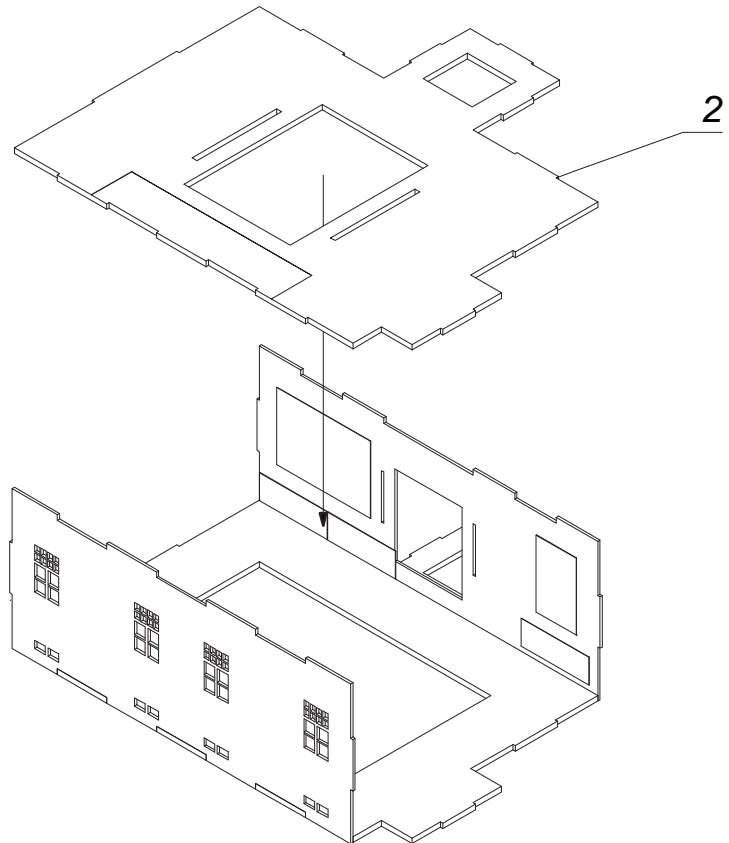
7.



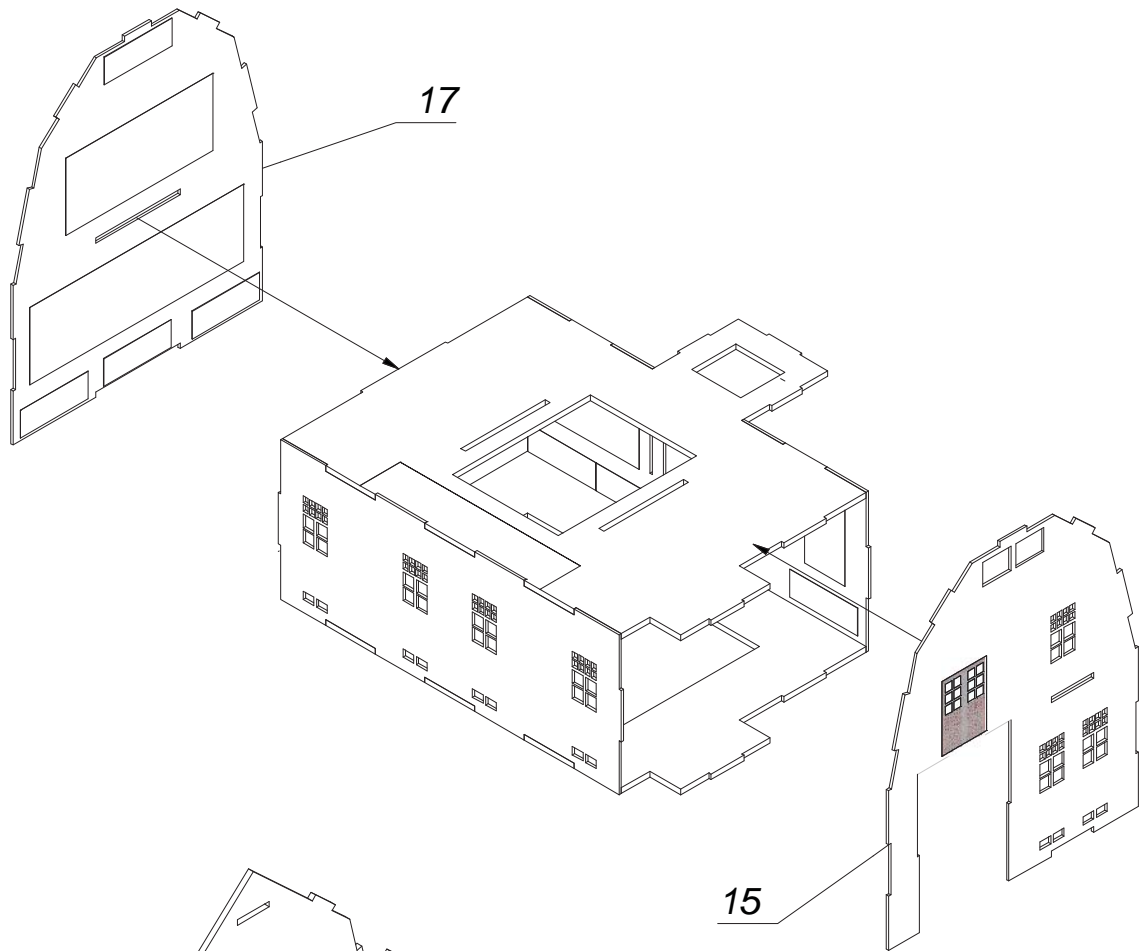
8.



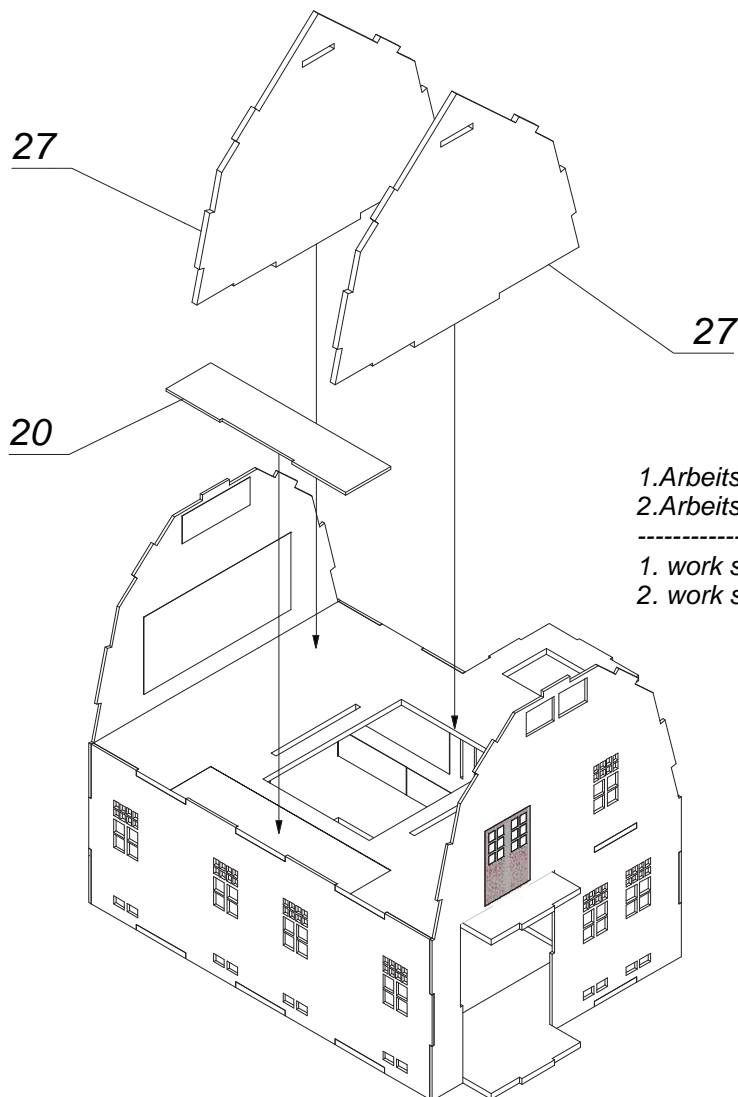
9.



10.



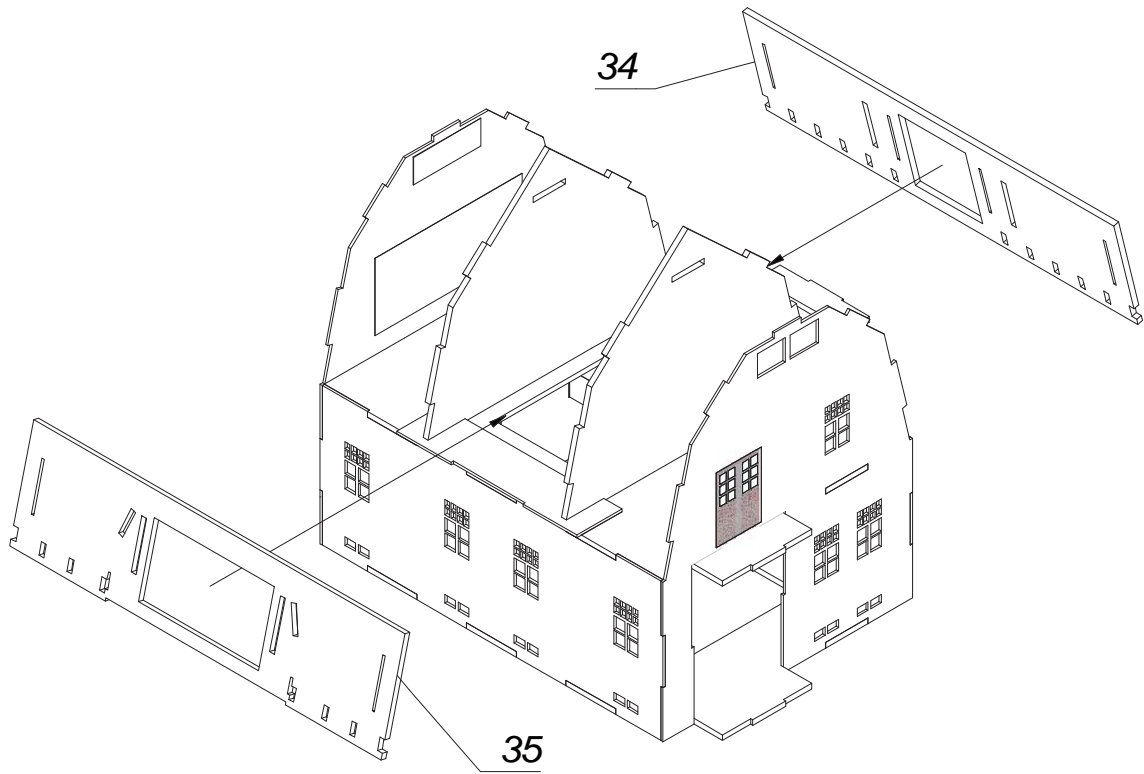
11.



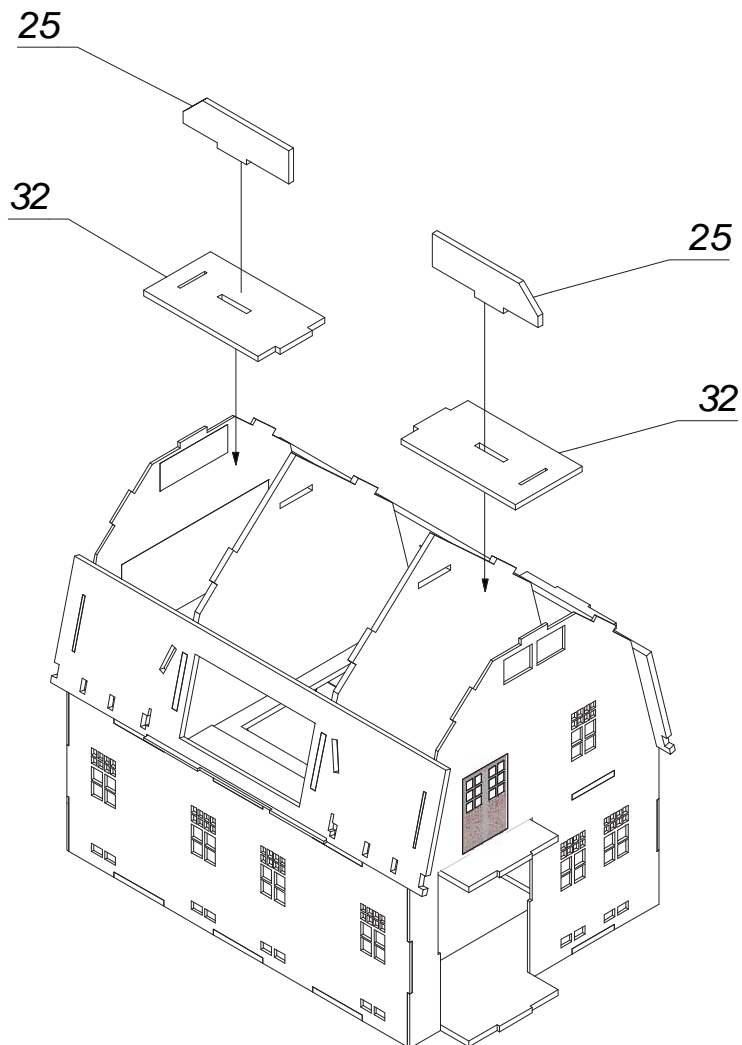
1. Arbeitsschritt: Teil 20 genau in Markierung kleben
2. Arbeitsschritt: Teil 27 (2x)

1. work step: part 20 position exactly within marking
2. work step: part 27 (2x)

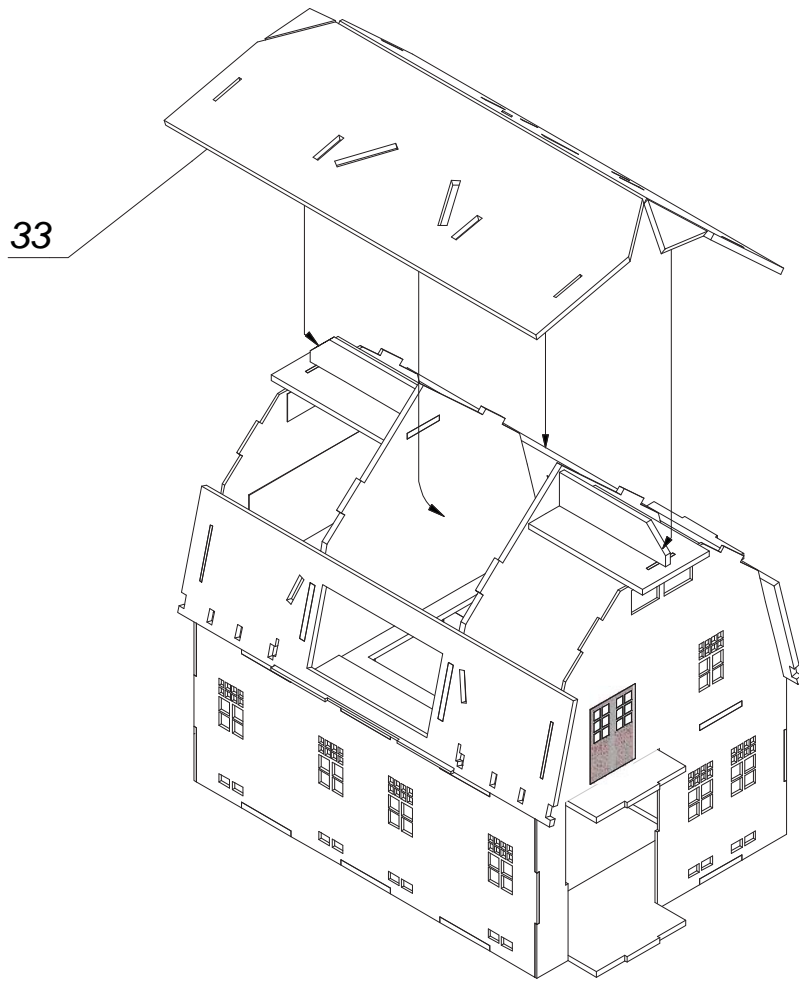
12.



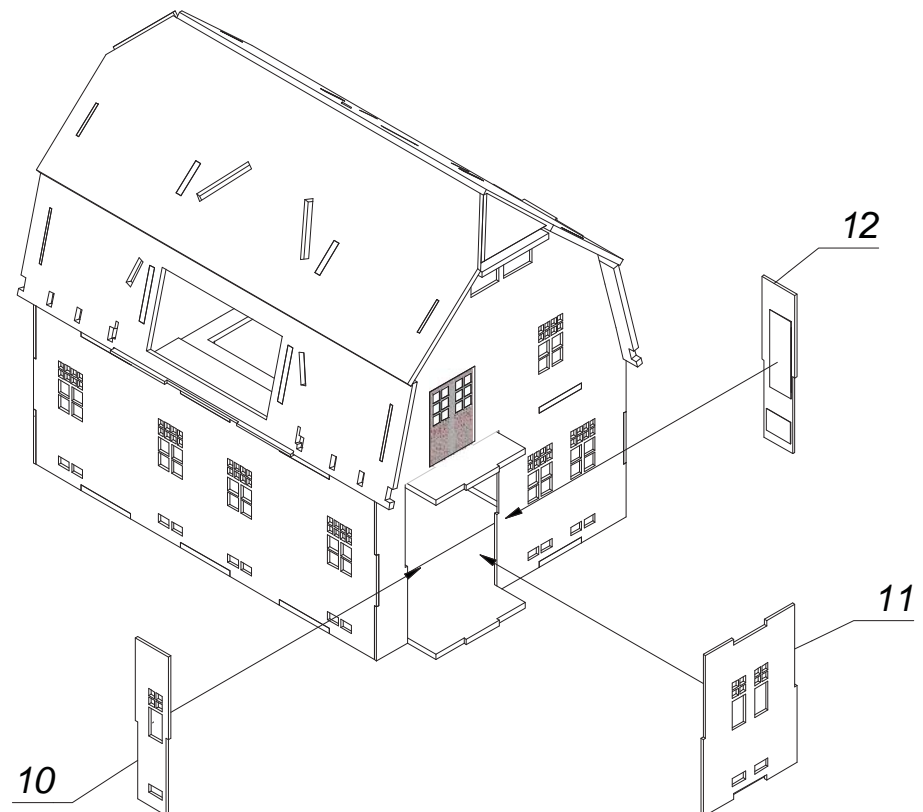
13.



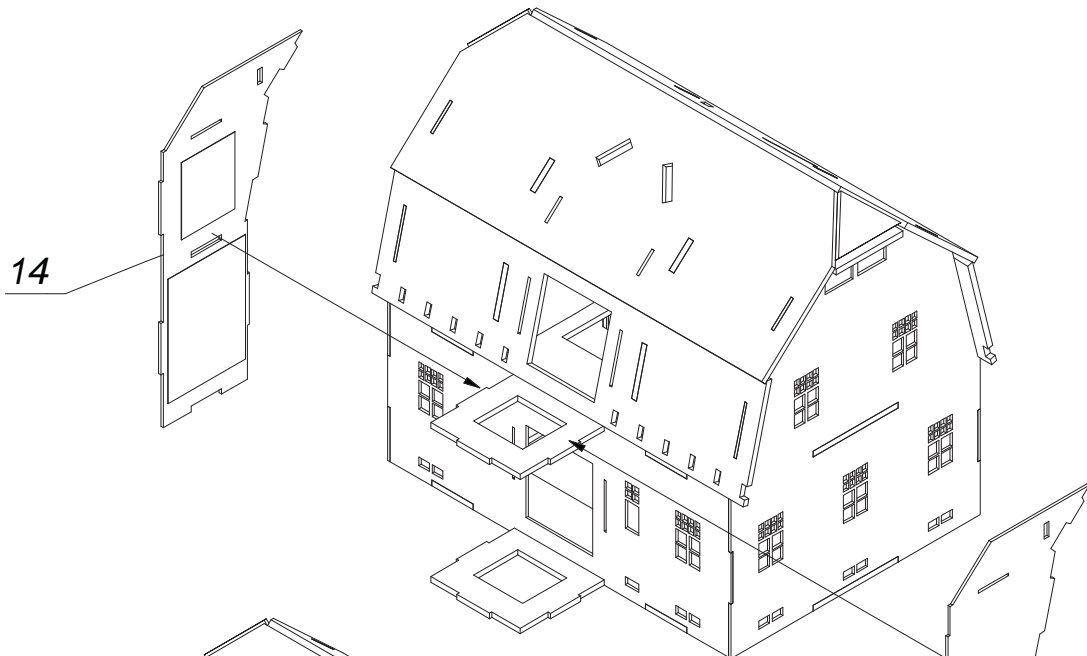
14.



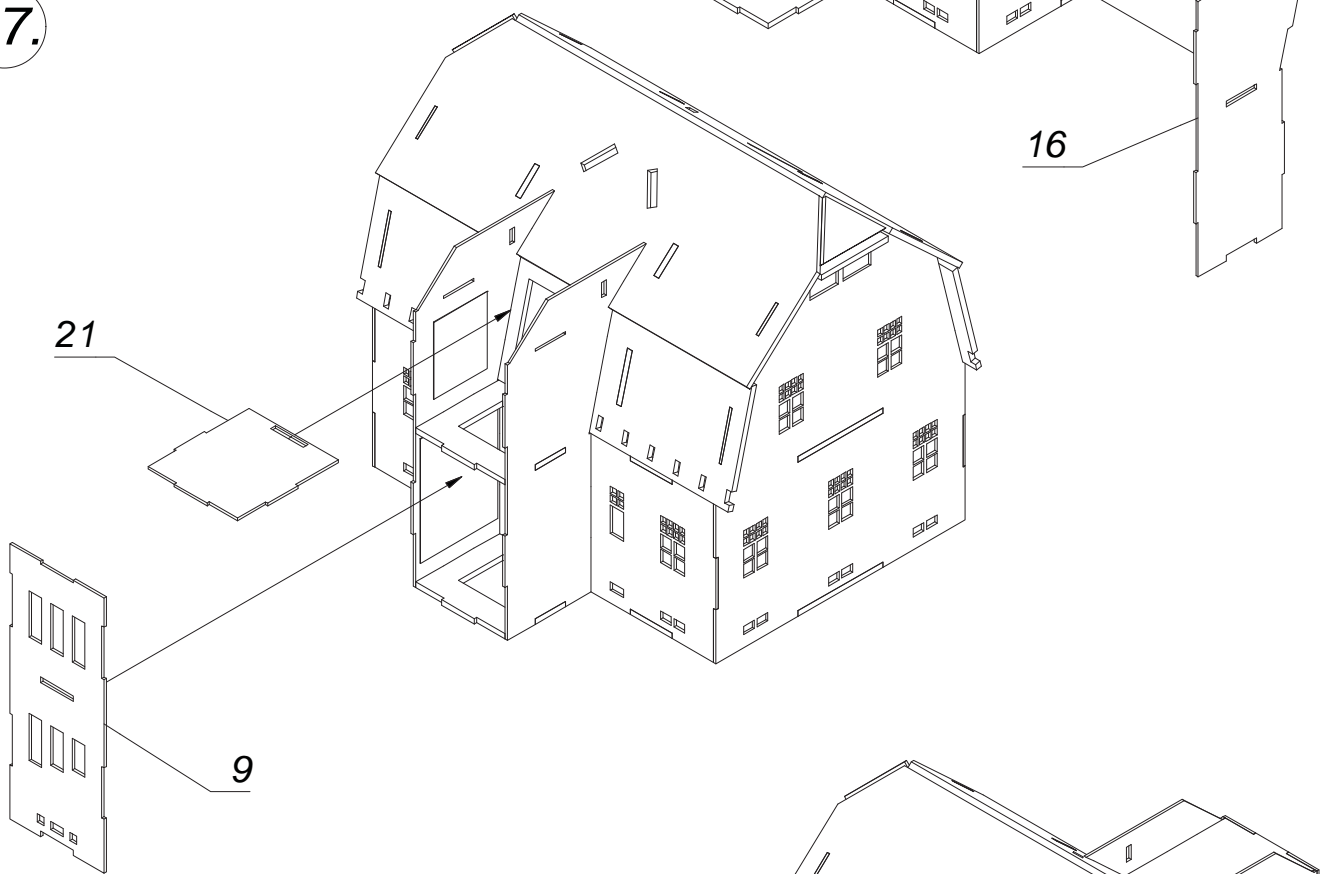
15.



16.



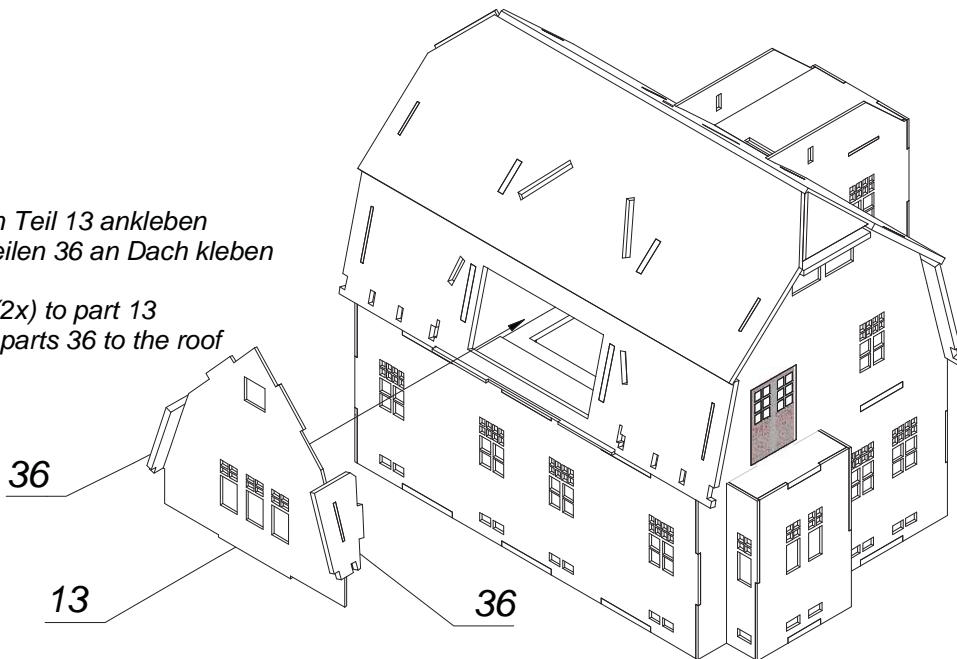
17.



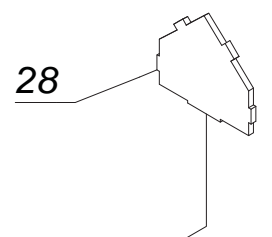
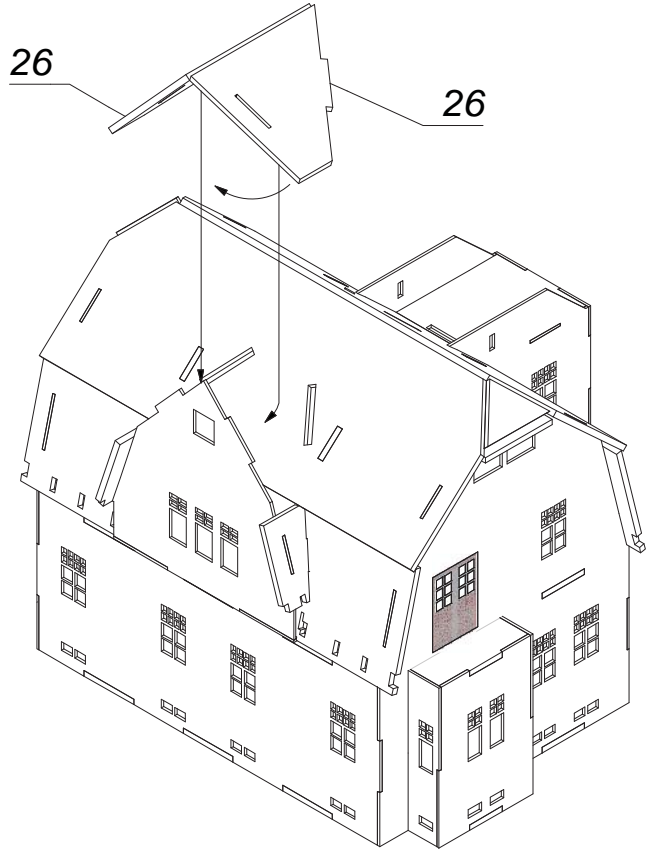
18.

- 1. Arbeitsschritt: Teil 36(2x) an Teil 13 ankleben
- 2. Arbeitsschritt: Teil 13 mit Teilen 36 an Dach kleben

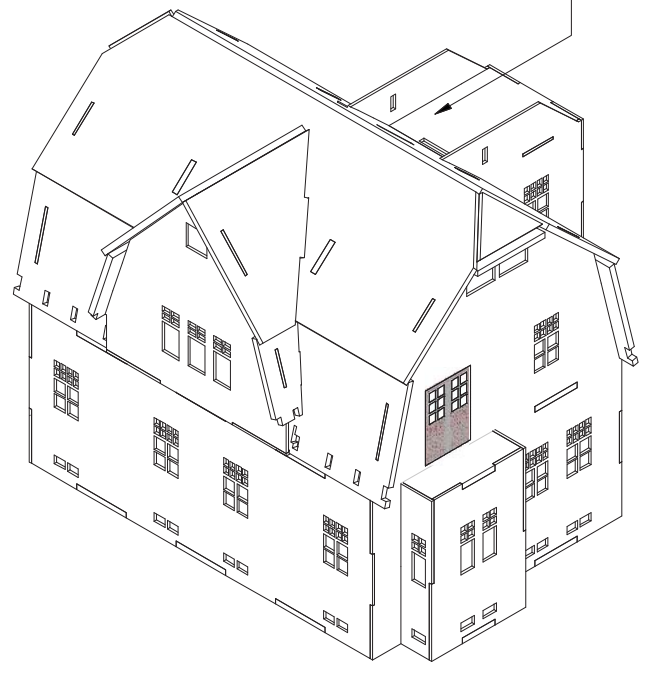
- 1. work step: add part part 36(2x) to part 13
- 2. work step: add part 13 with parts 36 to the roof



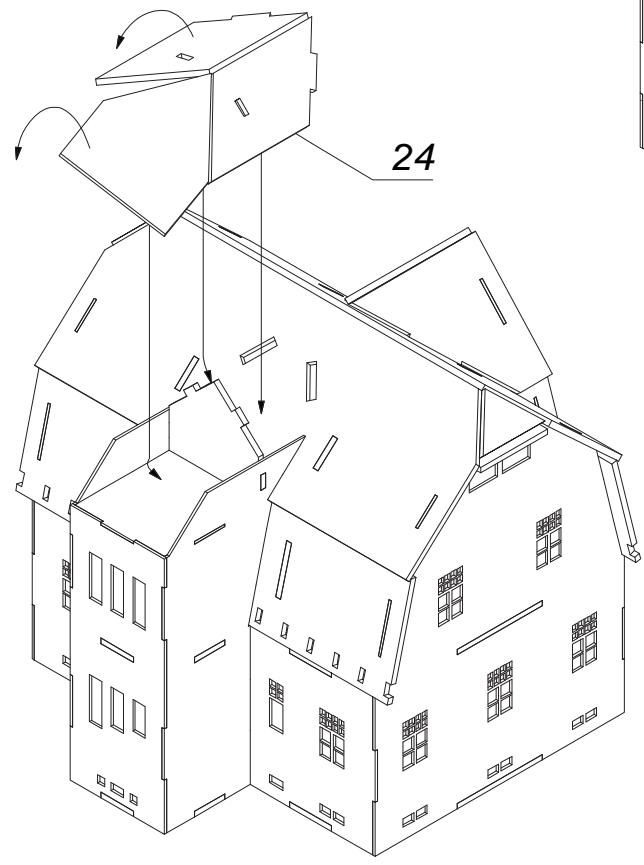
19.



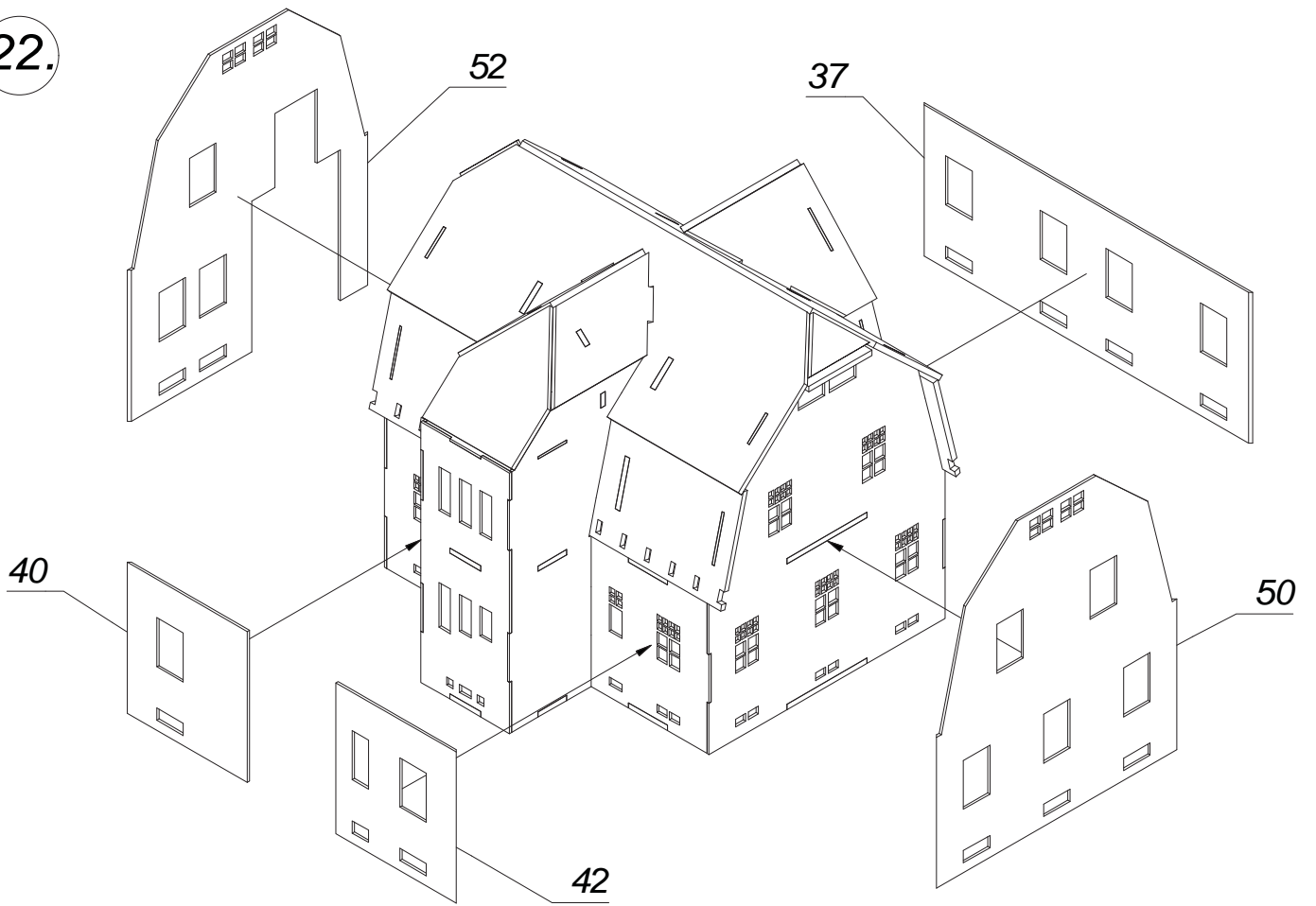
20.



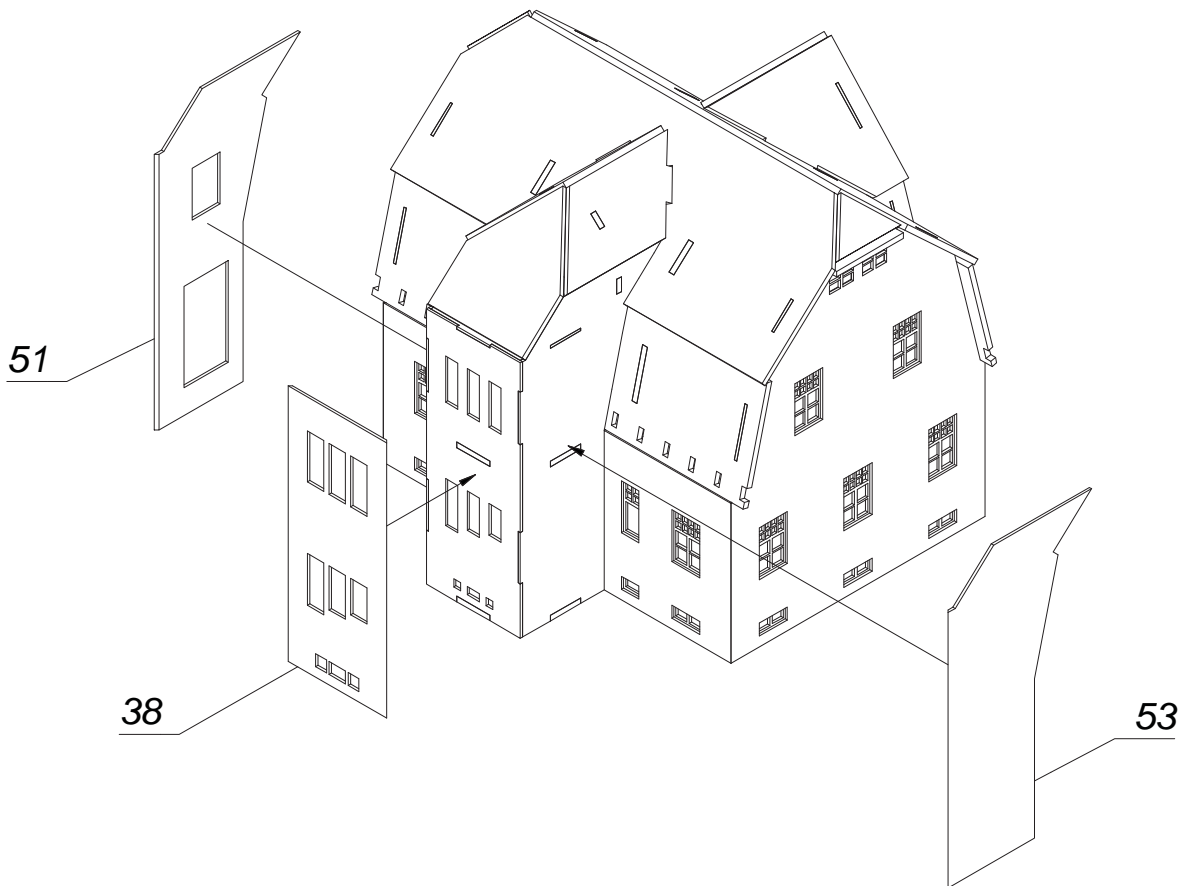
21.



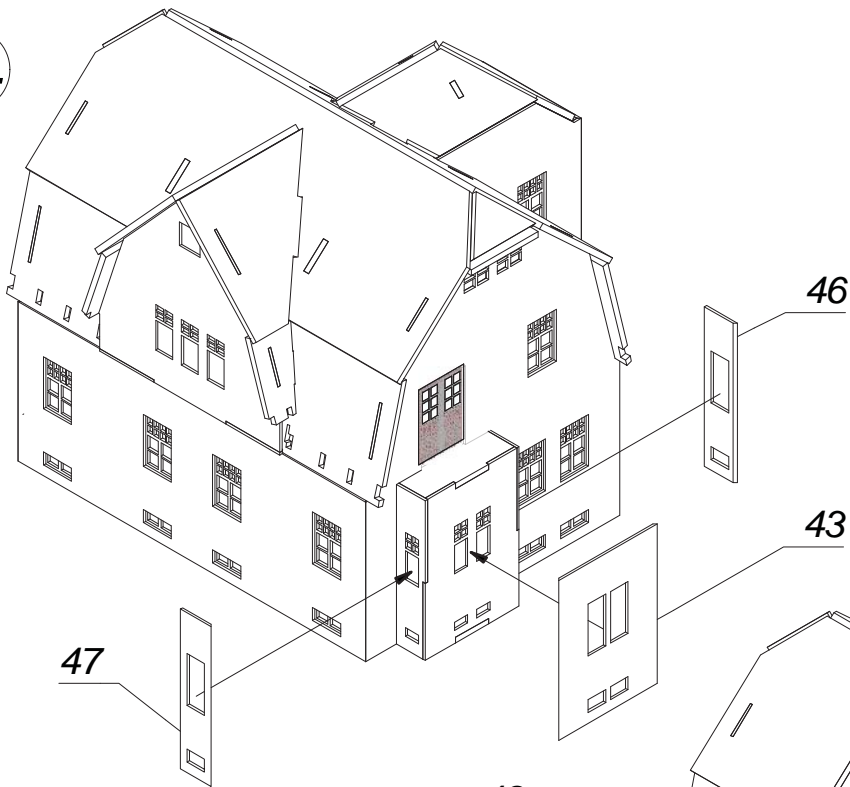
22.



23.



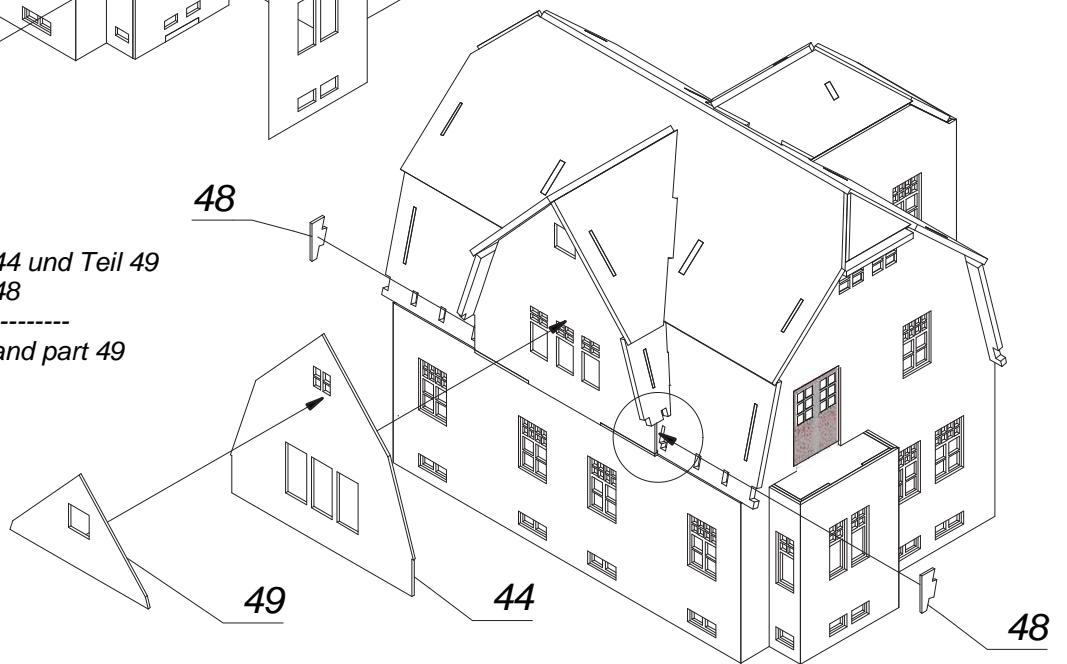
24.



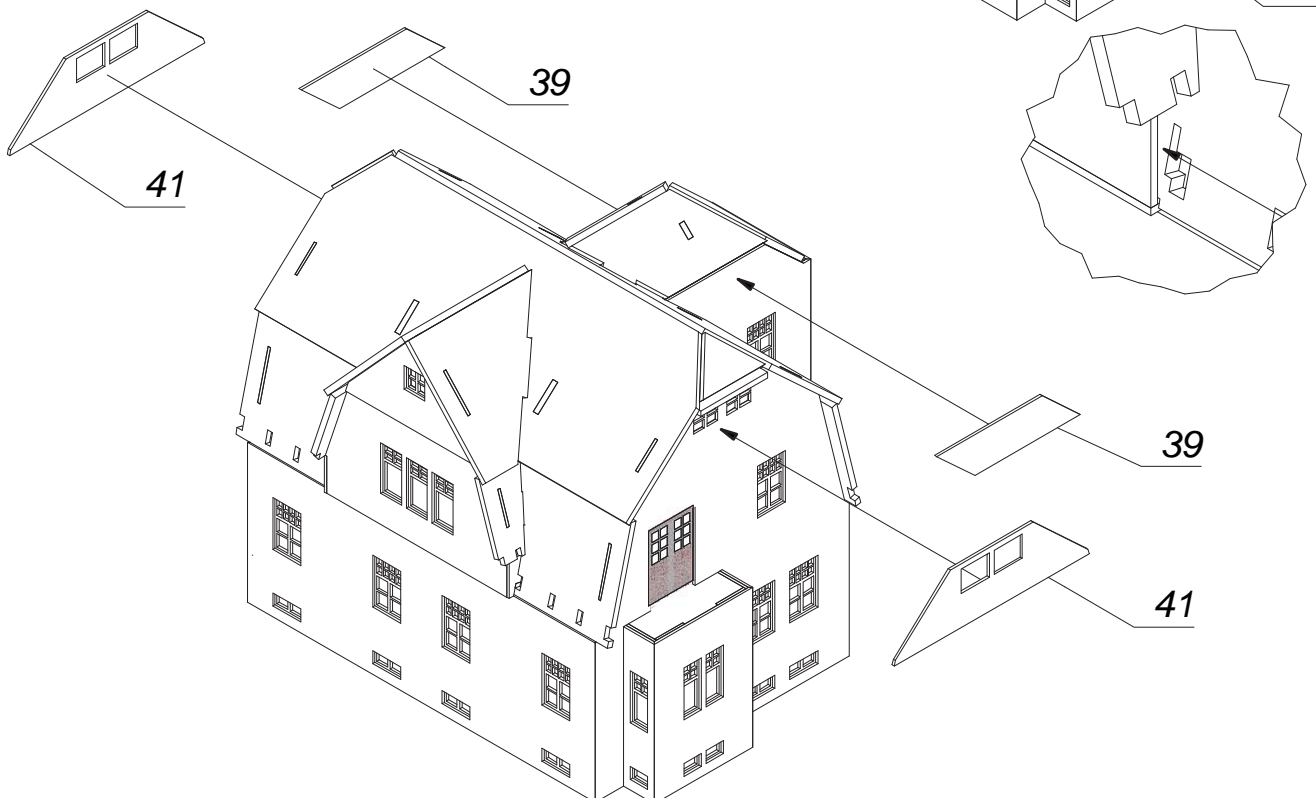
25.

1. Arbeitsschritt: Teil 44 und Teil 49
 2. Arbeitsschritt: Teil 48

 1. work step: part 44 and part 49
 2. work step: part 48



26.

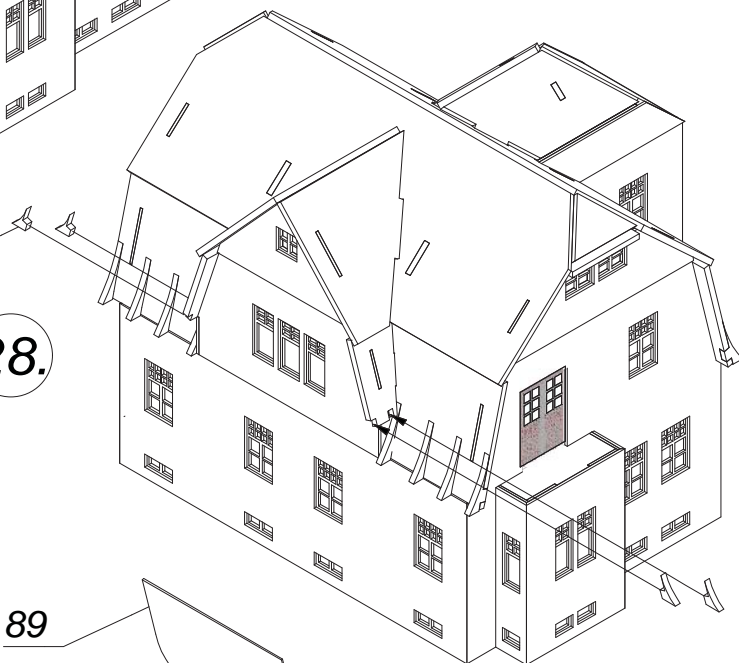


27.



28.

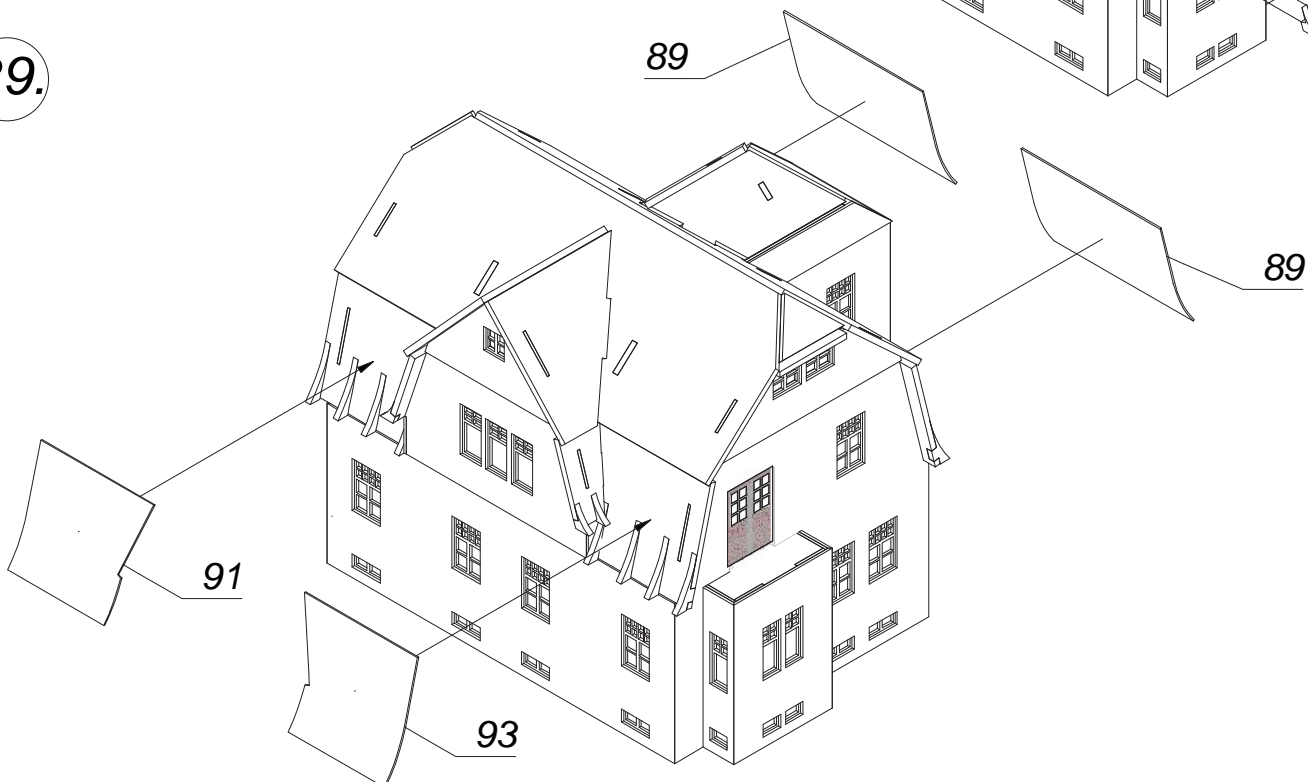
31 (4x)



29.

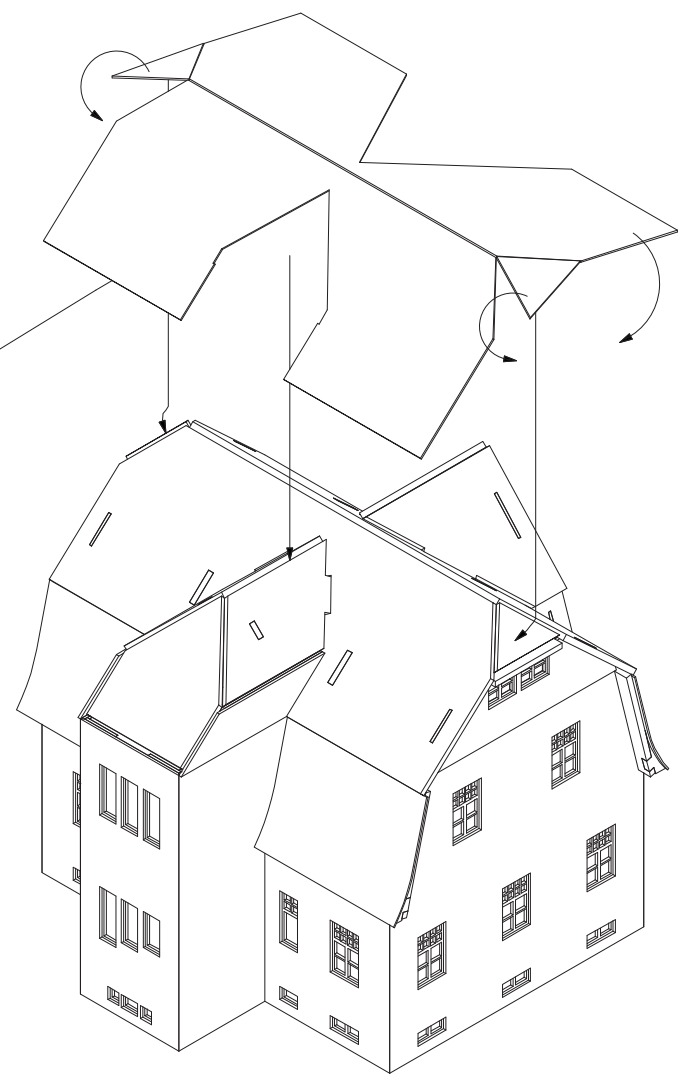
89

89



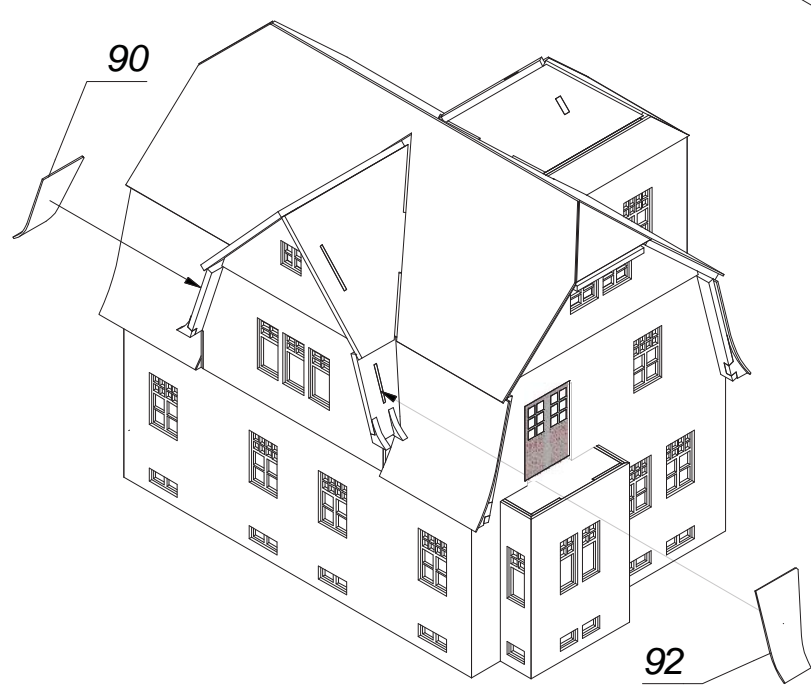
30.

88



31.

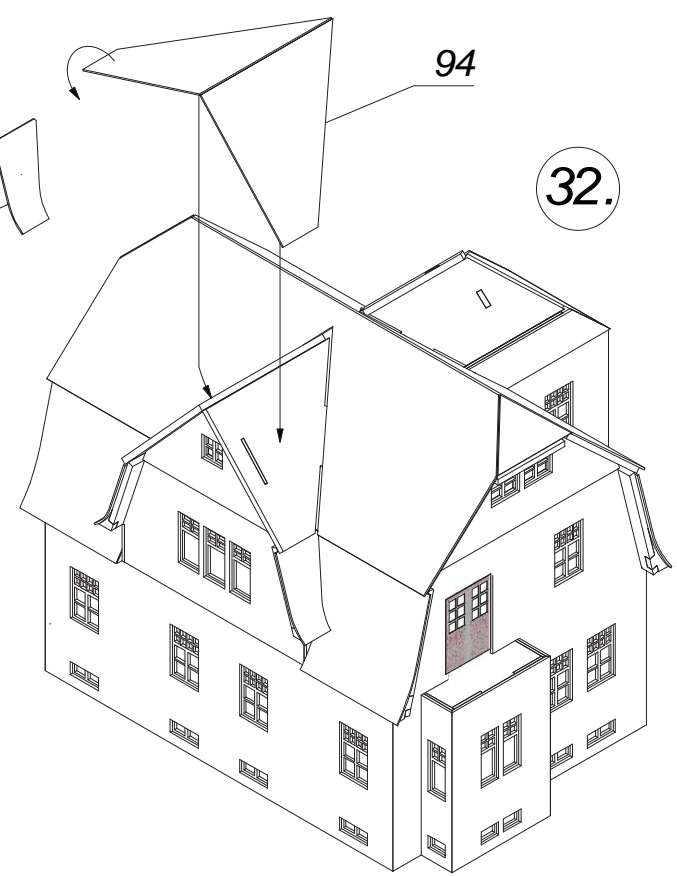
90



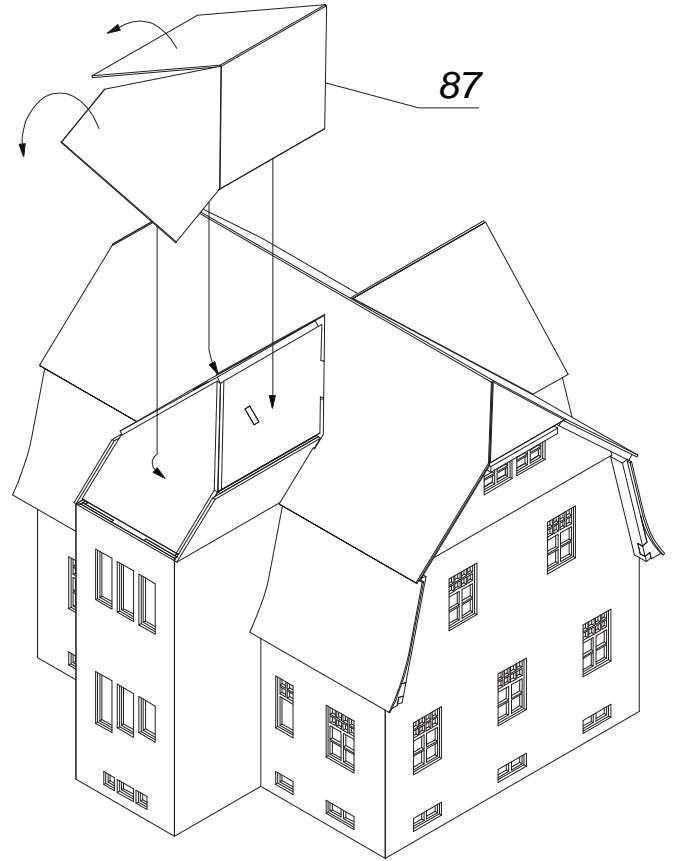
92

94

32.



33.



34.

Achtung!
Balkengravur sichtbar!

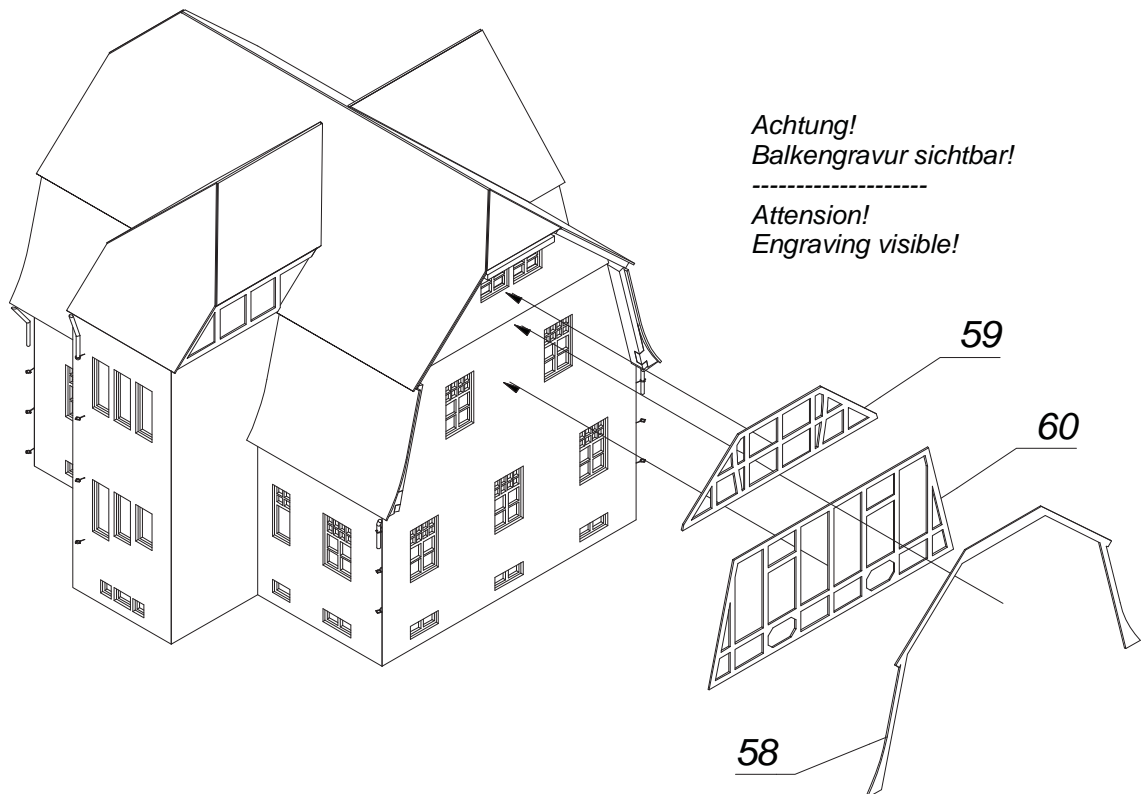
Attention!
Engraving visible!



35.

Achtung!
Balkengravur sichtbar!

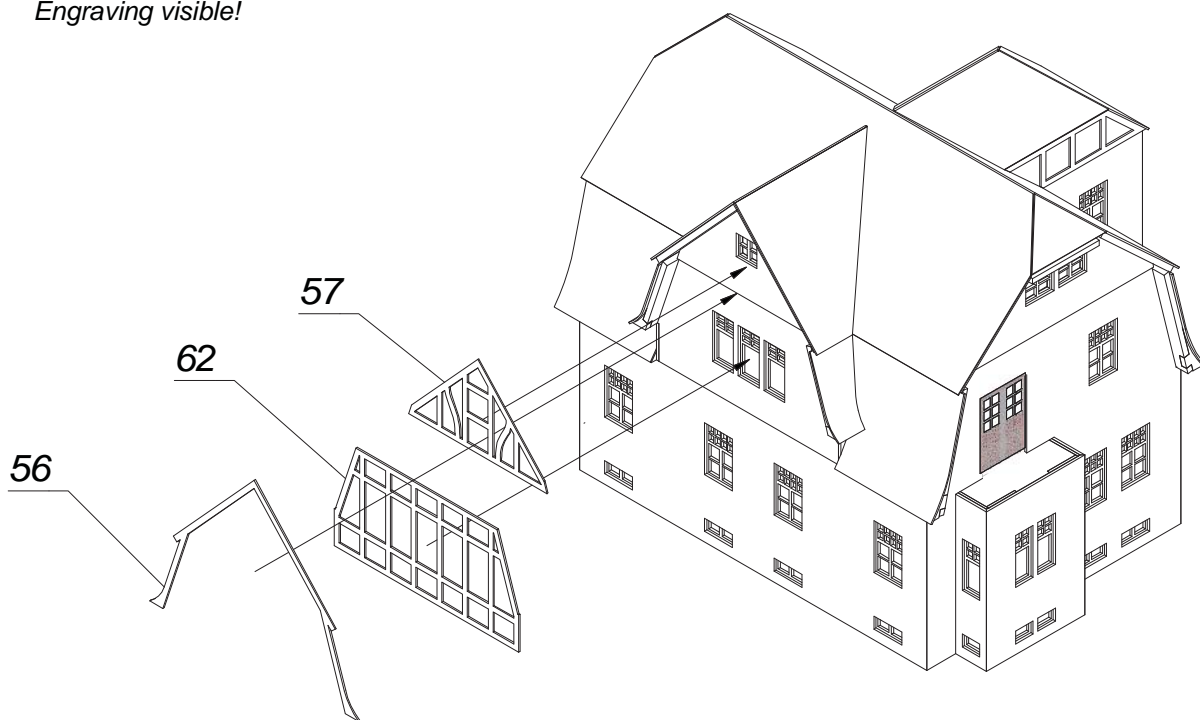
Attention!
Engraving visible!



36.

Achtung!
Balkengravur sichtbar!

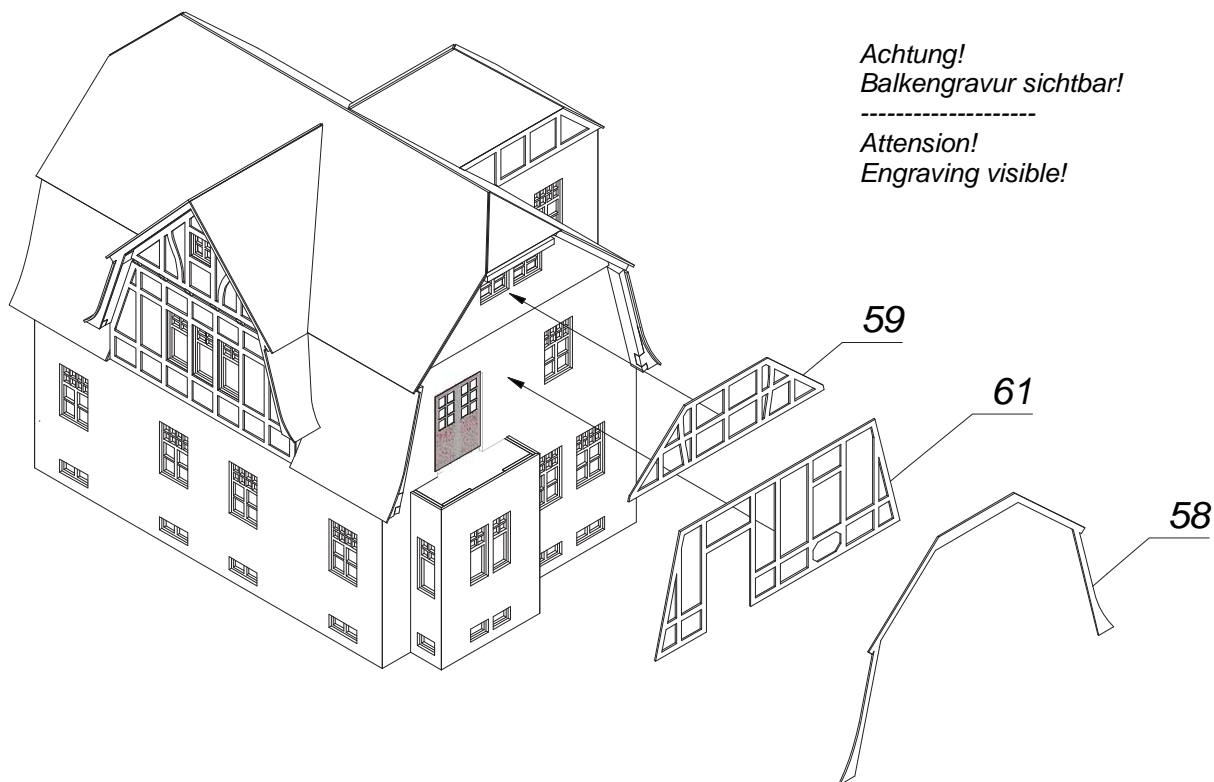
Attention!
Engraving visible!



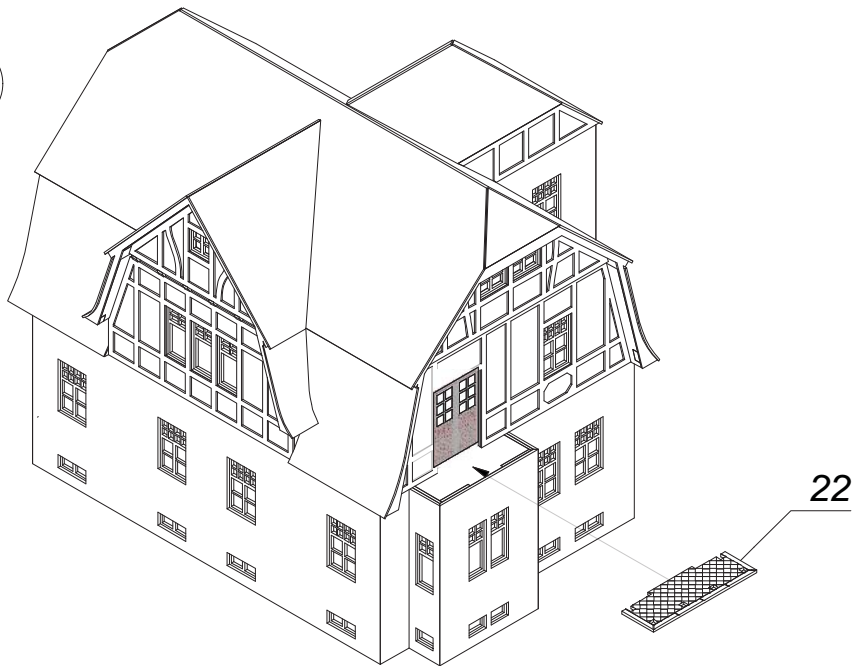
37.

Achtung!
Balkengravur sichtbar!

Attention!
Engraving visible!

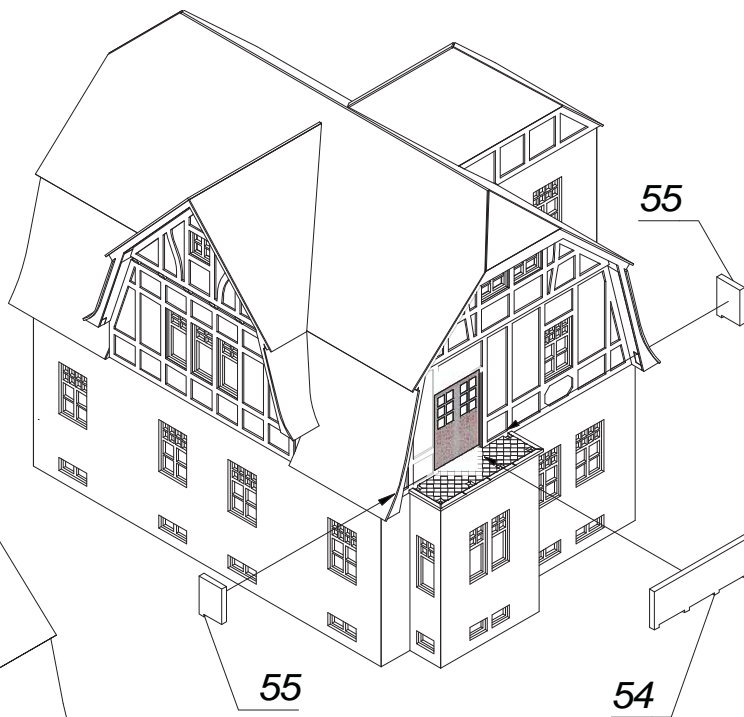


38.

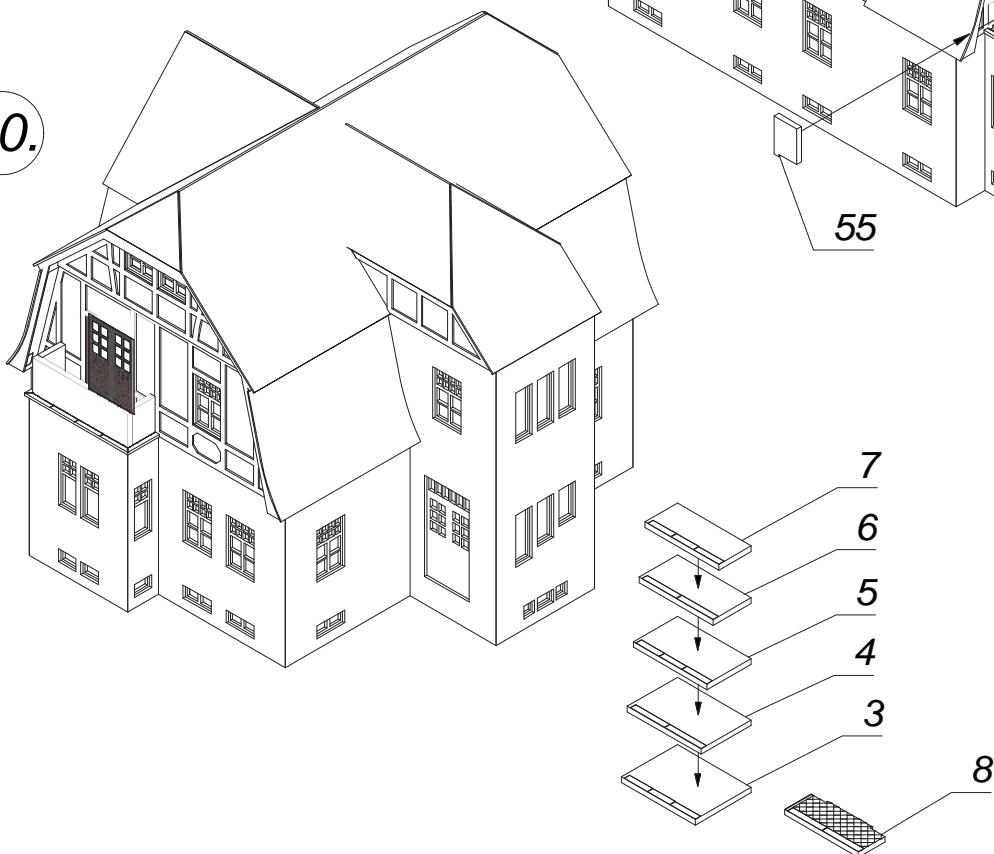


39.

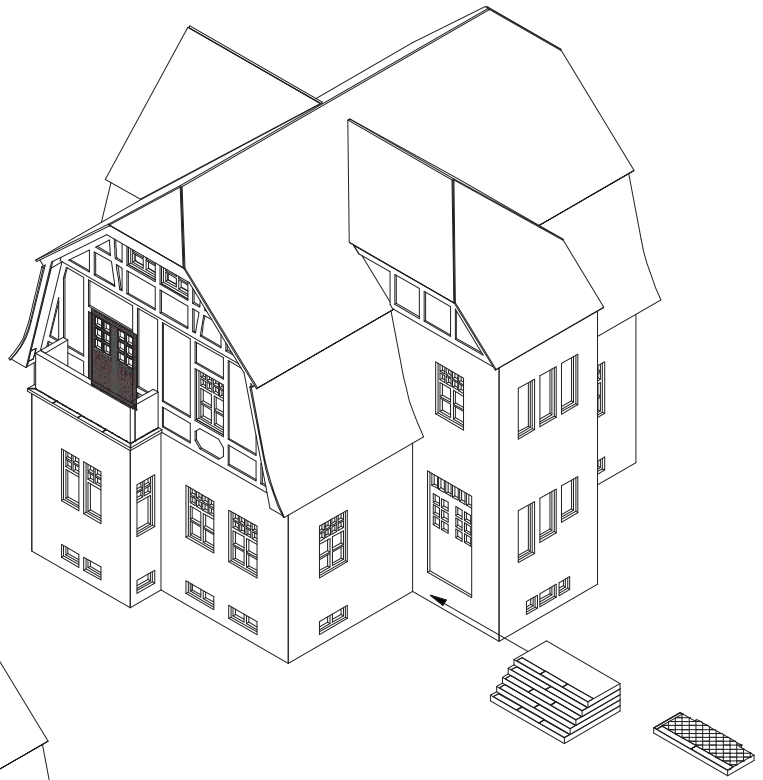
- 1. Arbeitsschritt: Teil 55 (2x)
 - 2. Arbeitsschritt: Teil 54
-
- 1. work step: part 55 (2x)
 - 2. work step: part 54



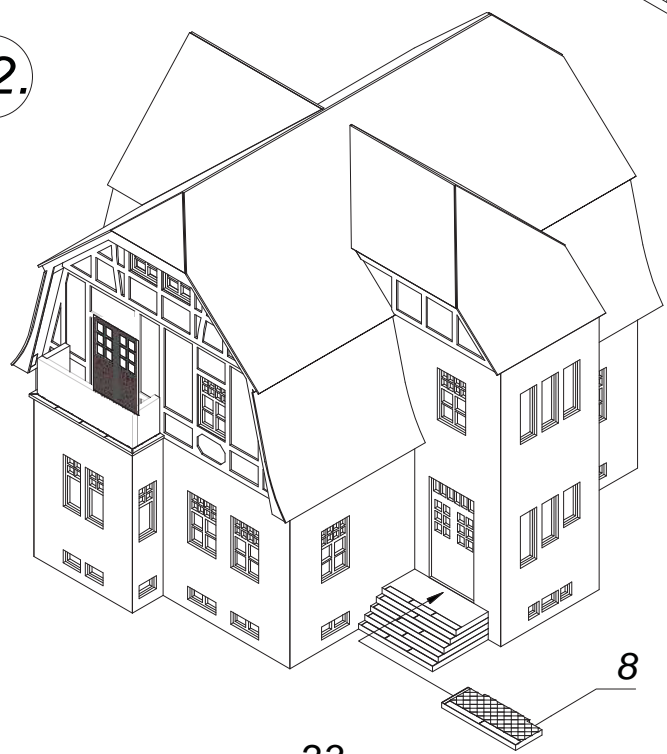
40.



41.



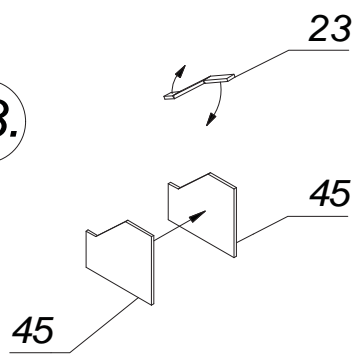
42.



8

23

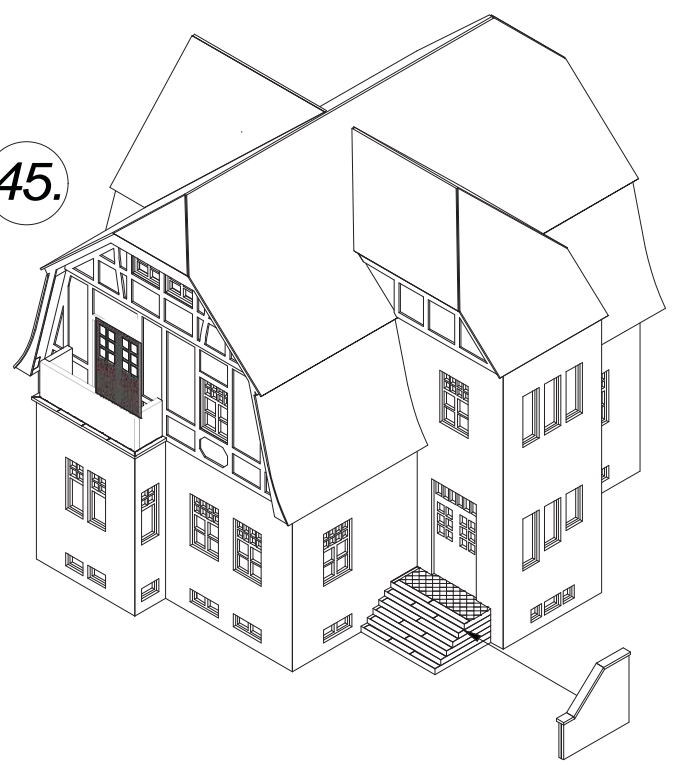
43.



45

45

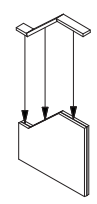
45.



44.

glatte Fläche nach oben!

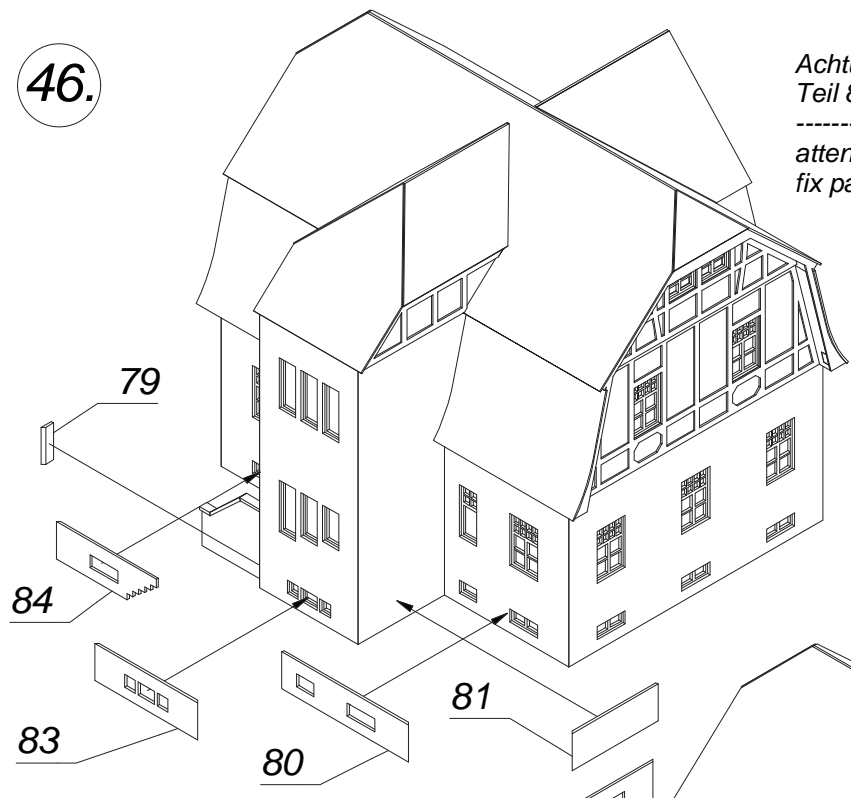
 plain surface upturned



46.

Achtung!
Teil 80 vor Teil 81 anbringen

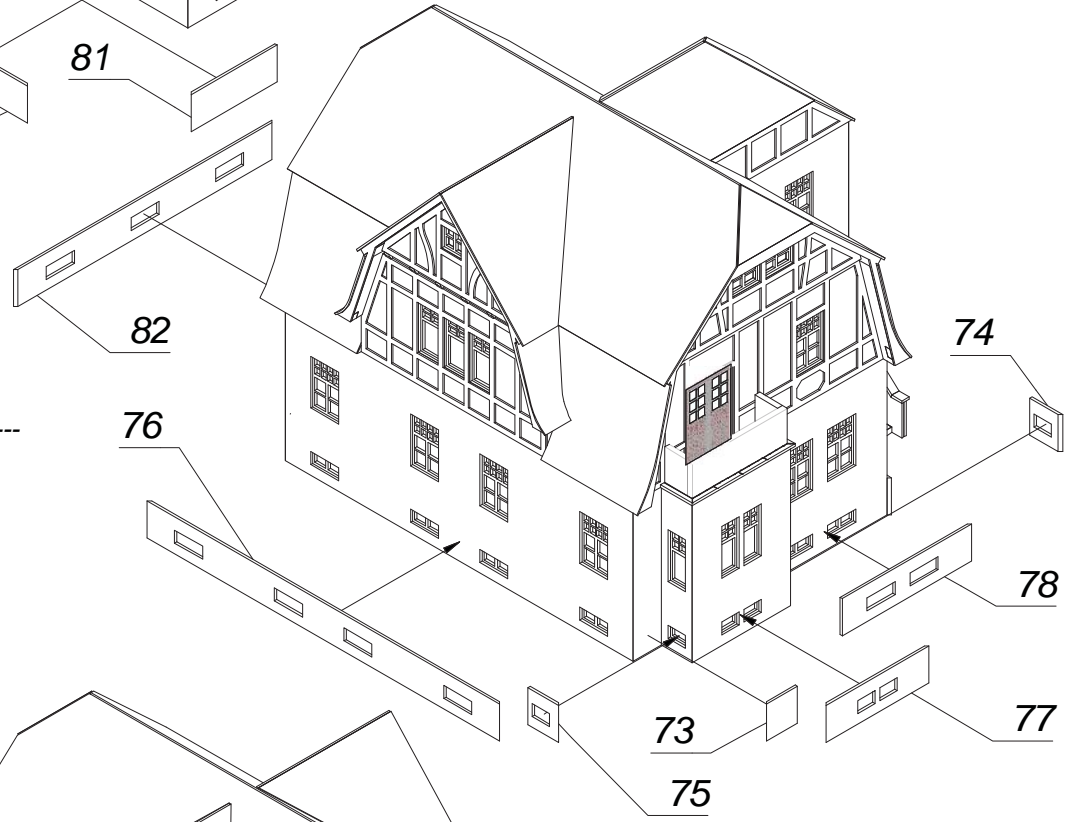
attention!
fix part 80 before part 81



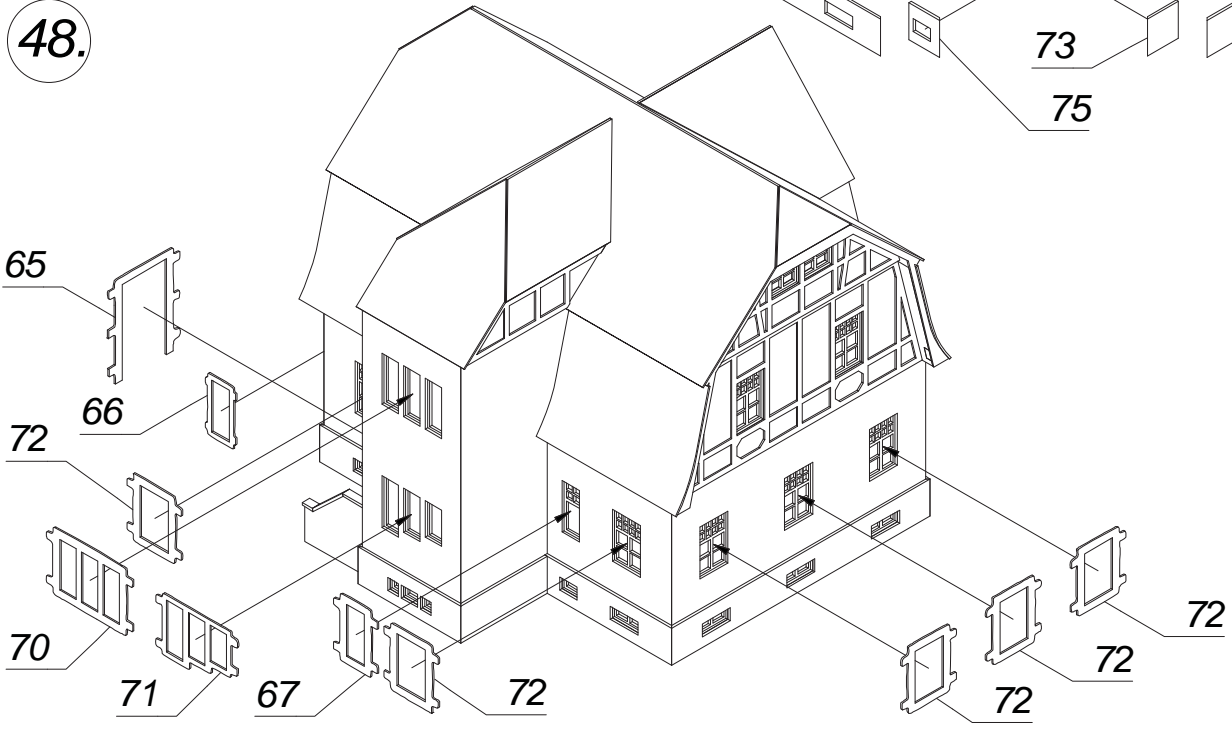
47.

Achtung!
Teil 78 und Teil 73 vor
Teil 74 und Teil 75 anbringen

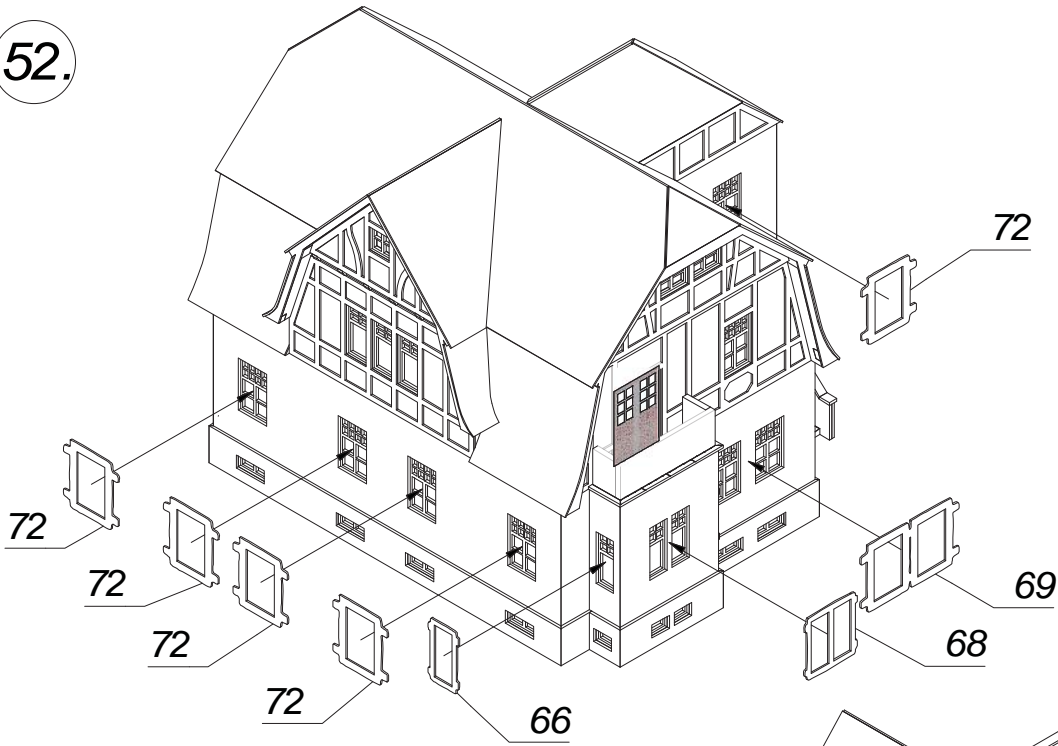
attention!
fix part 78 and part 73 before
part 74 and part 75



48.



52.



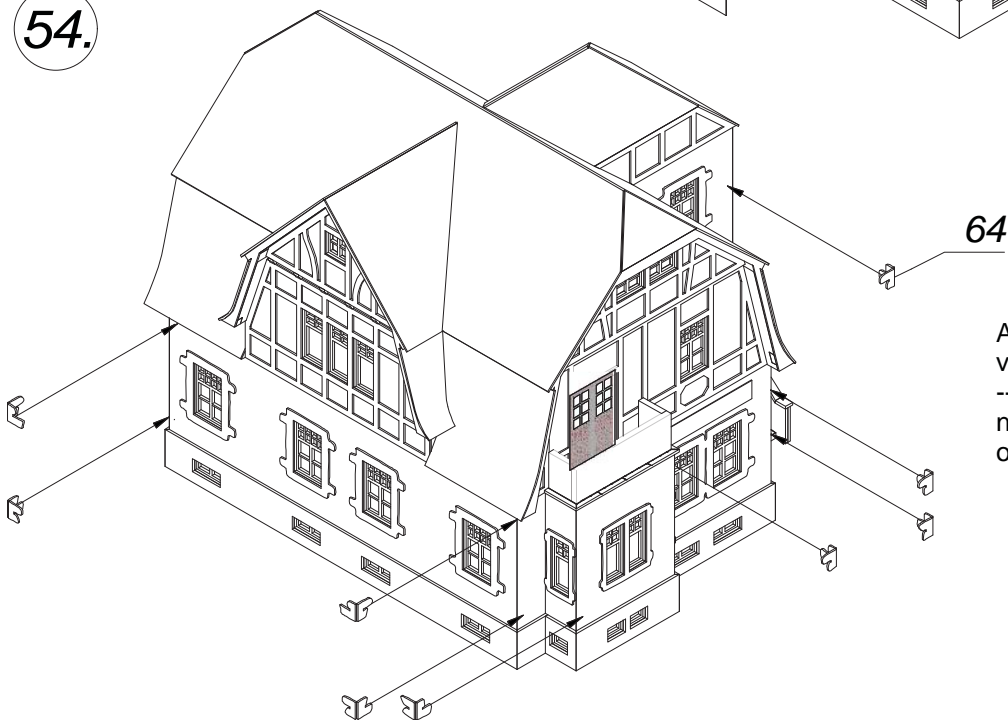
53.

S = Schilder nach Wahl

 label at one`s own choice



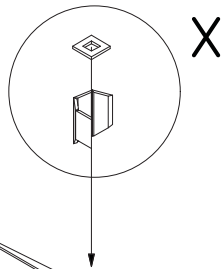
54.



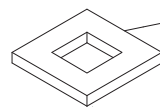
Anzahl und Positionierung
 von Teil 64 nach Wahl

 number and positioning
 of part 64 at one`s own choice

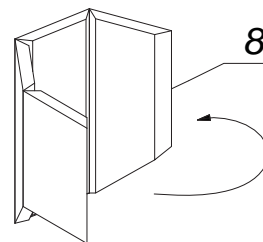
56.



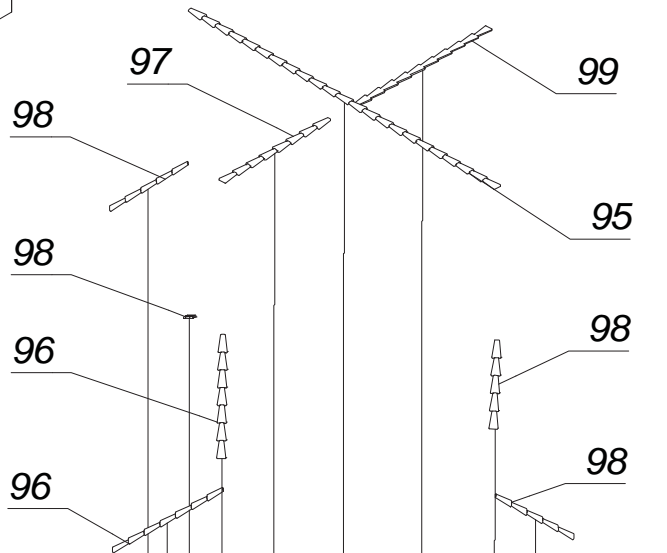
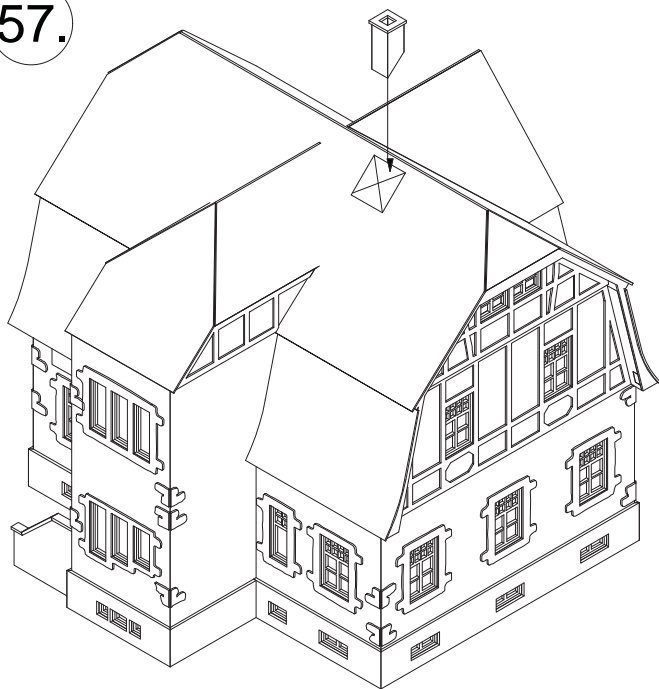
86



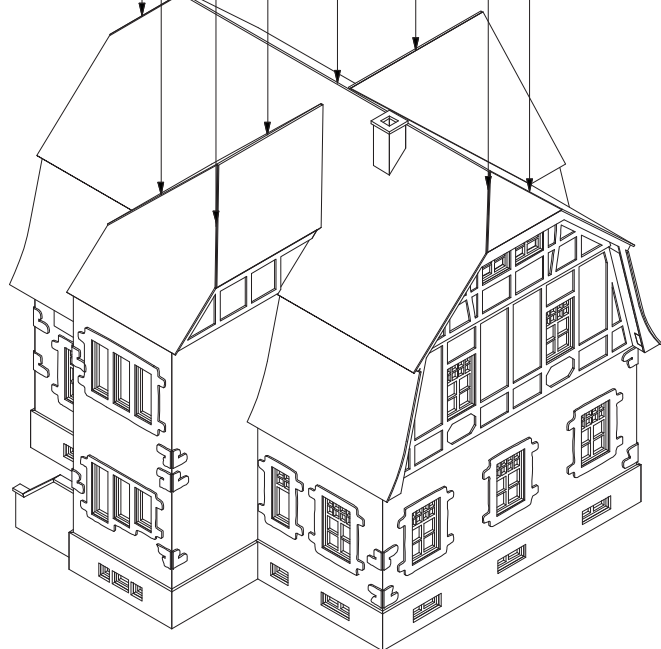
85



57.



58.





... wie im Original

63712 Weingut „Hauser-Bühler“ - Gesindehaus N

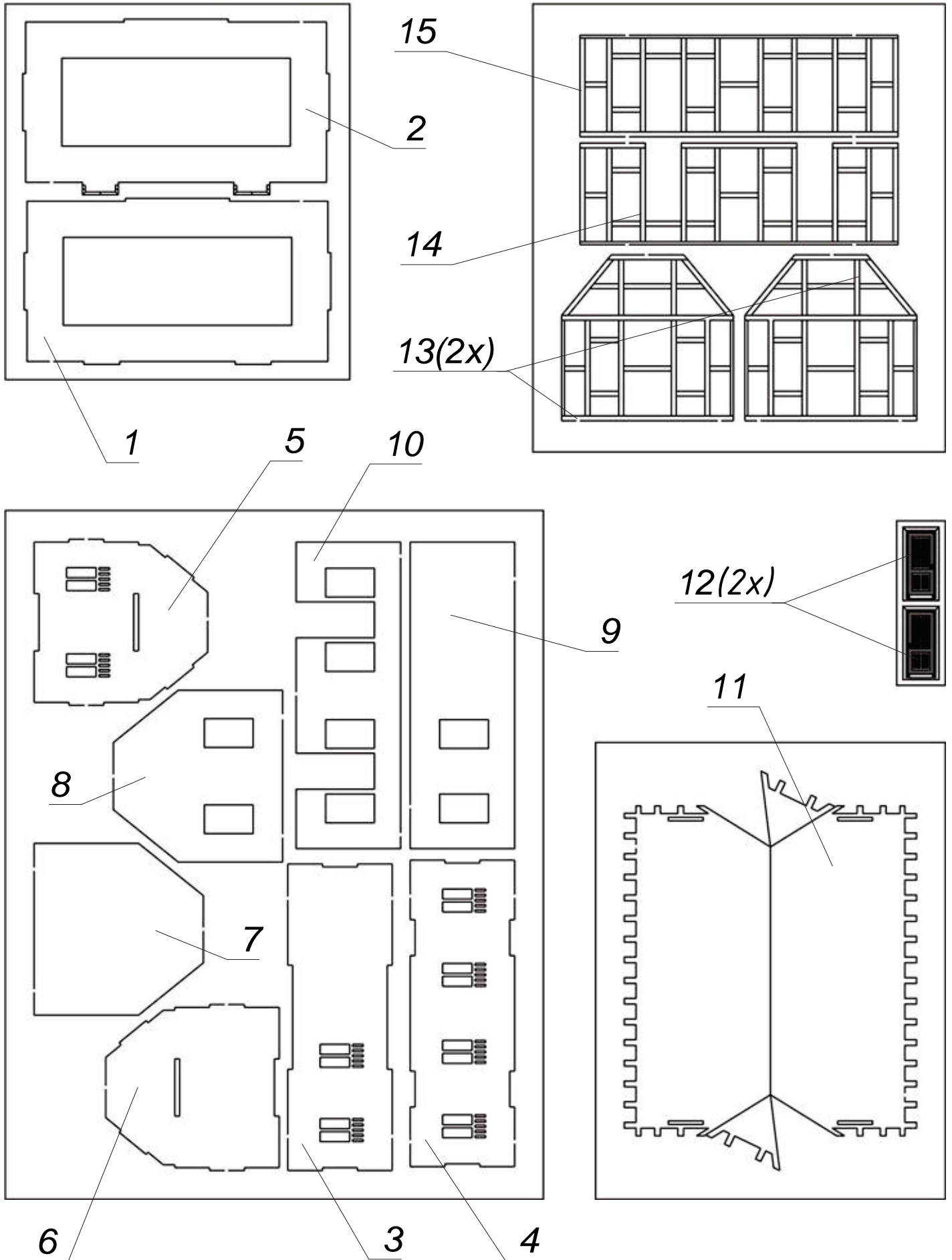
Winery "Hauser-Bühler" - Servants' House N

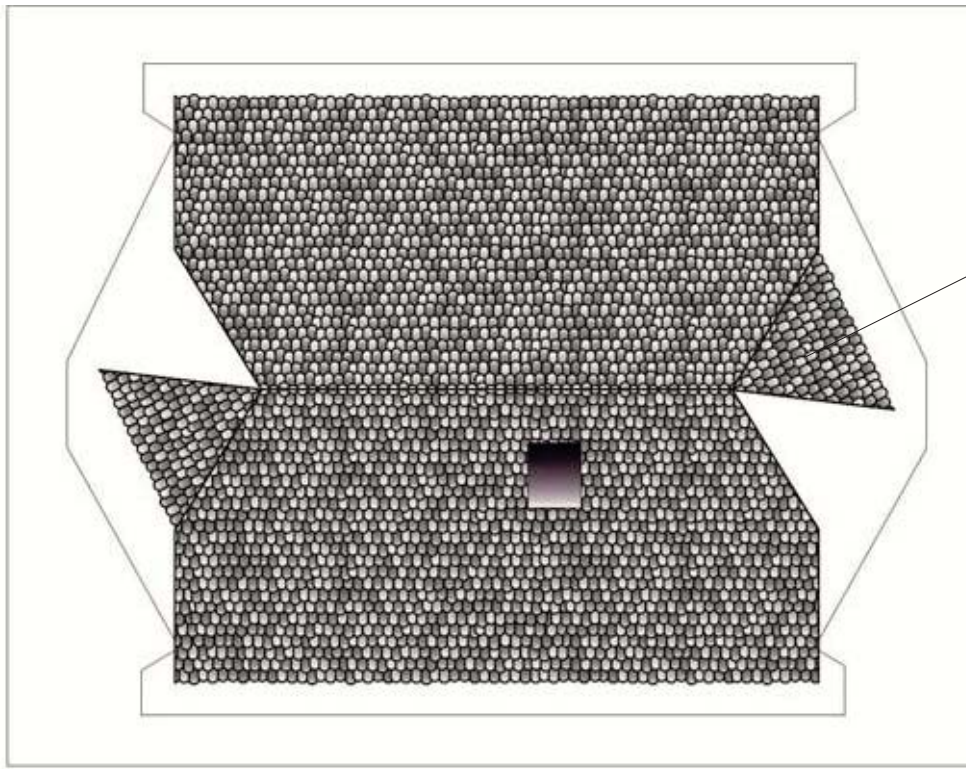
Domaine viticole "Hauser-Bühler" - Maison des domestiques N

Propiedad vinícola "Hauser-Bühler" - Casa en empleados N

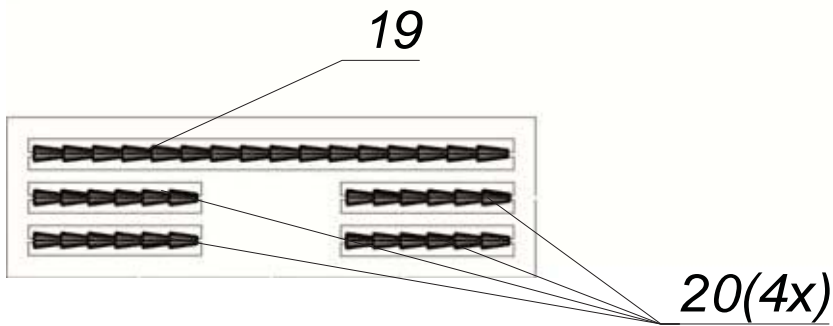
Wijnhuis "Hauser-Bühler" - Personeelshuis N





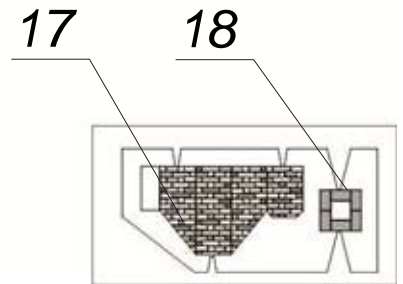


16



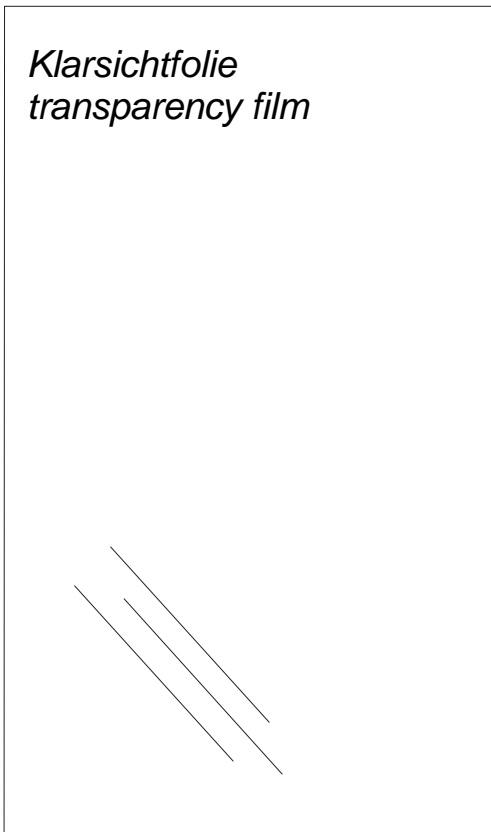
19

20(4x)



17

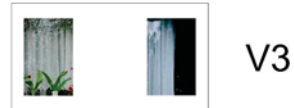
18



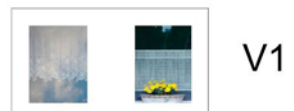
Klarsichtfolie
transparency film

G

Vorhänge Weingut Hauser-Bühler
GESINDEHAUS



V3

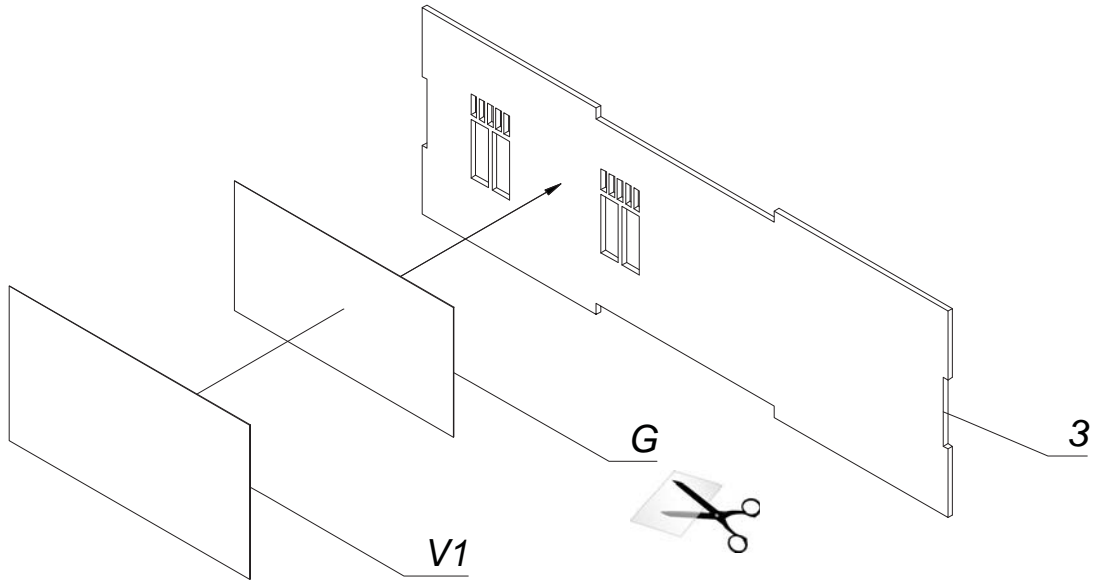


V1

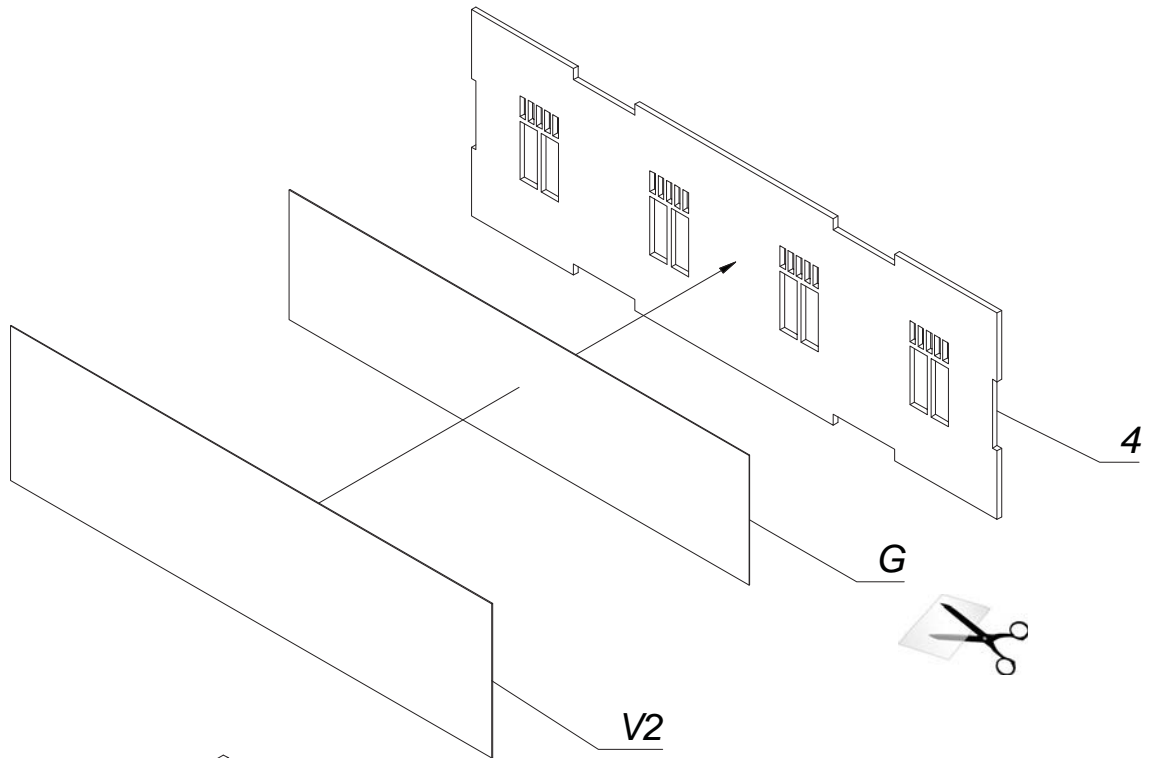


V2

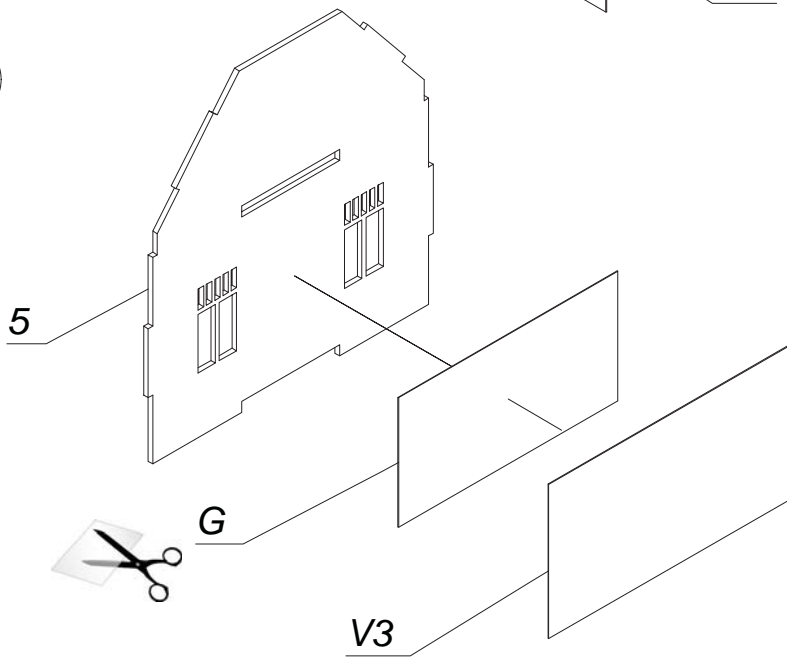
1.



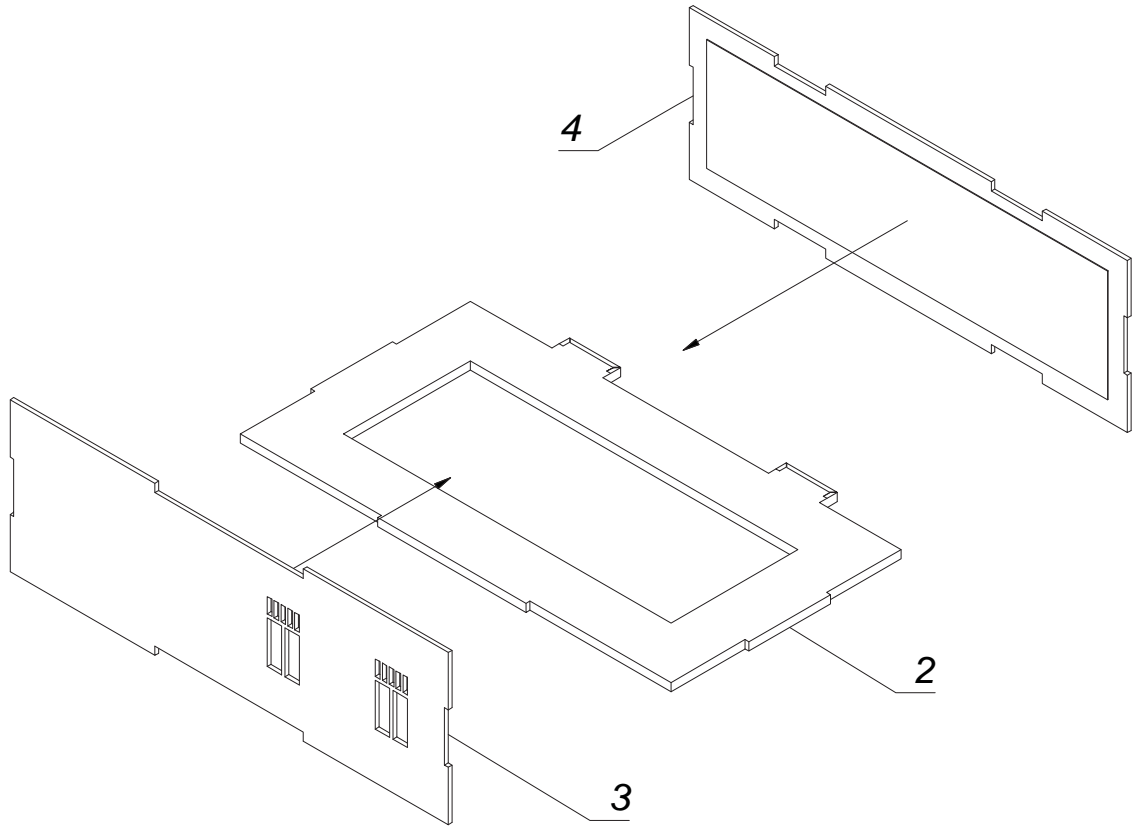
2.



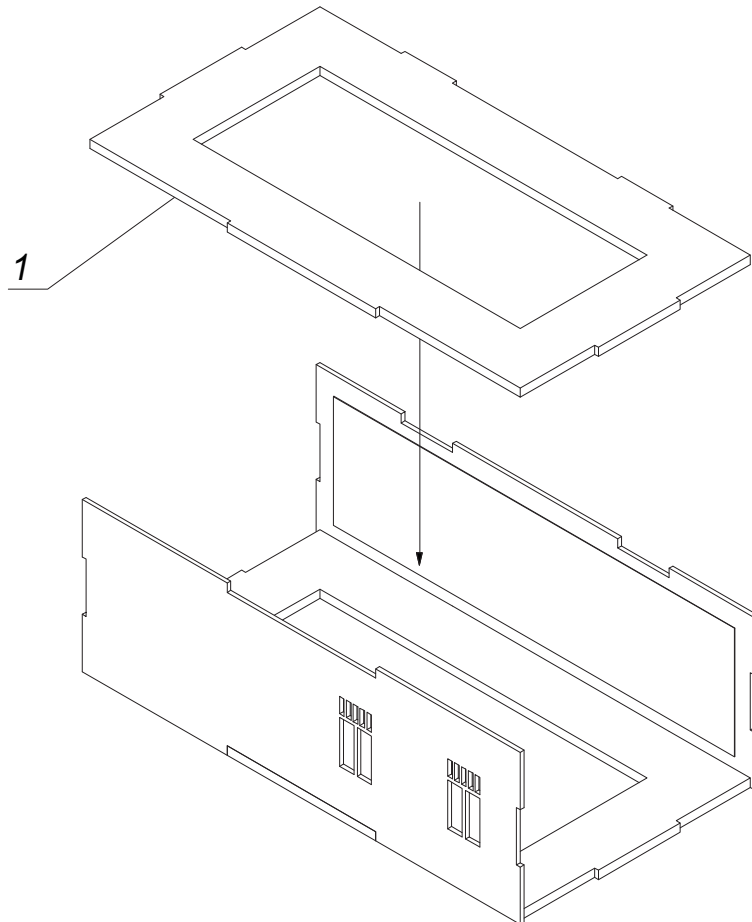
3.



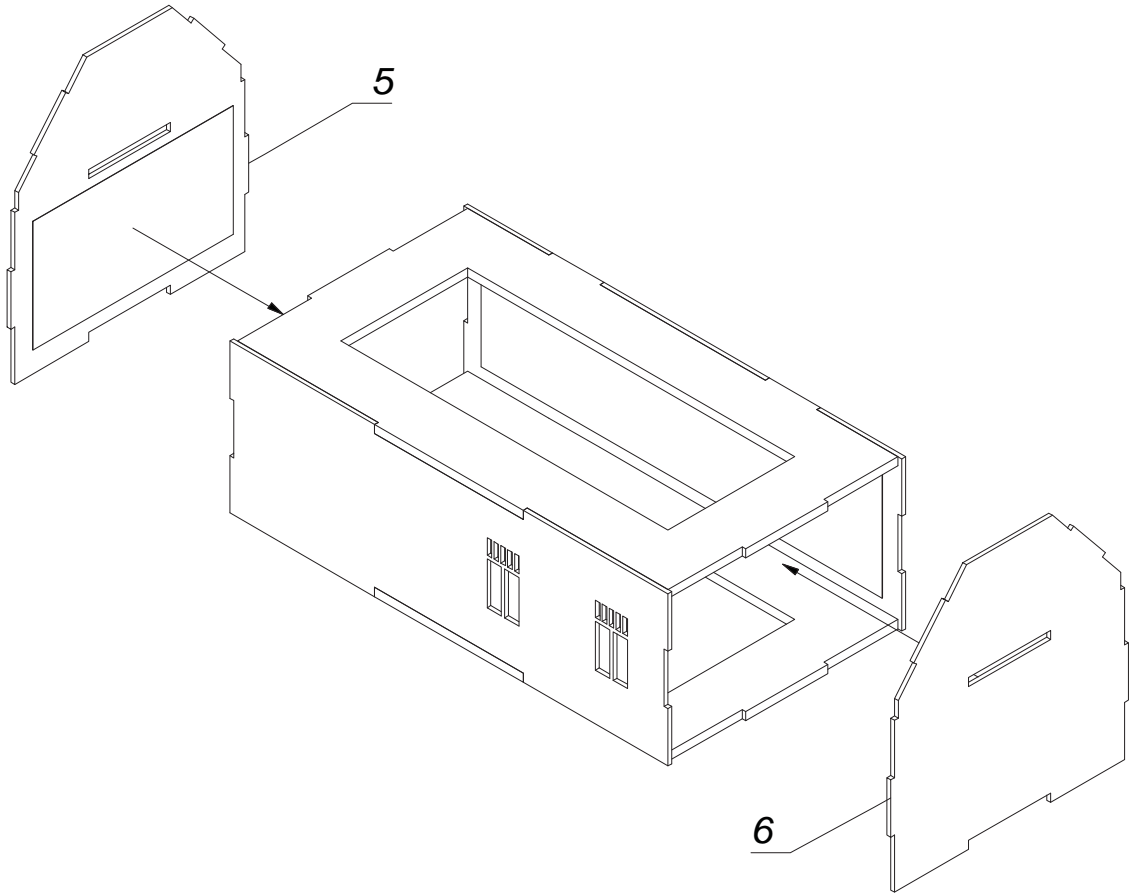
4.



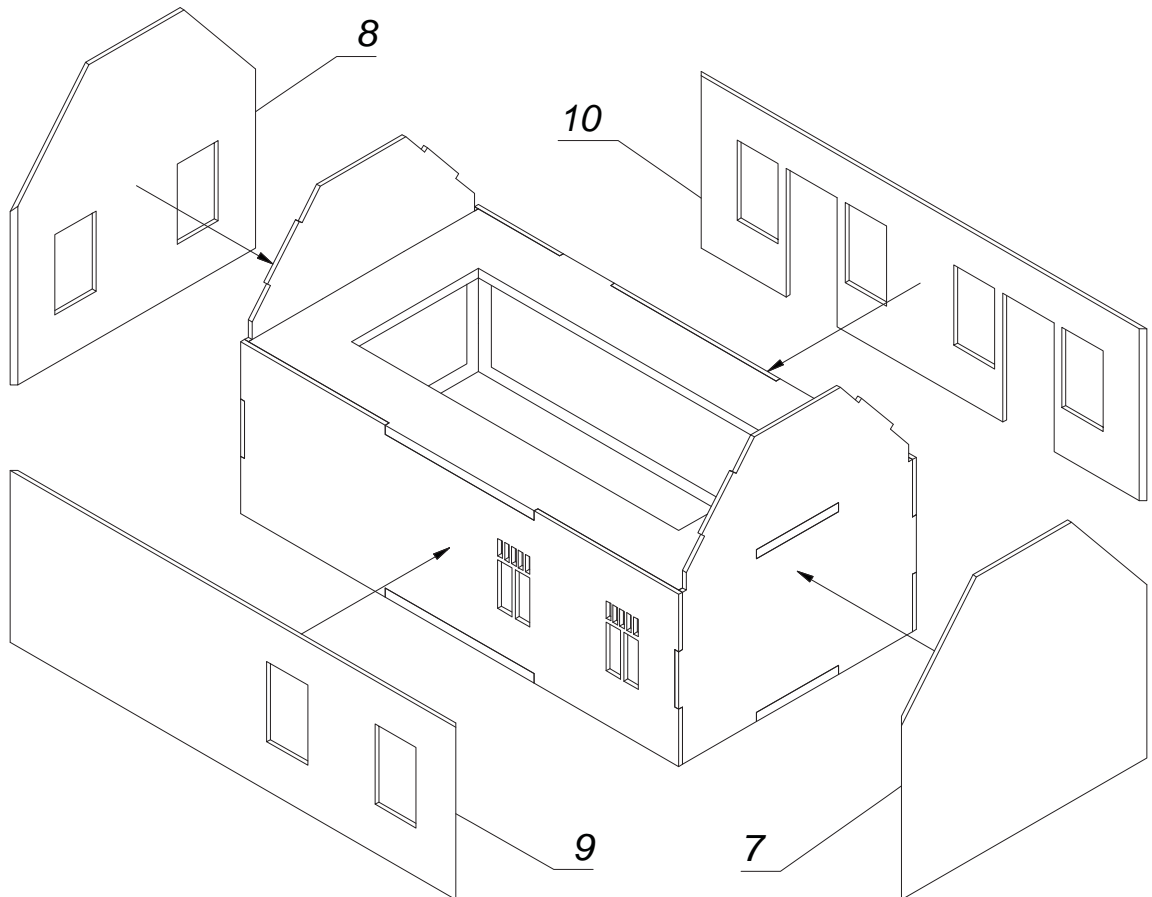
5.



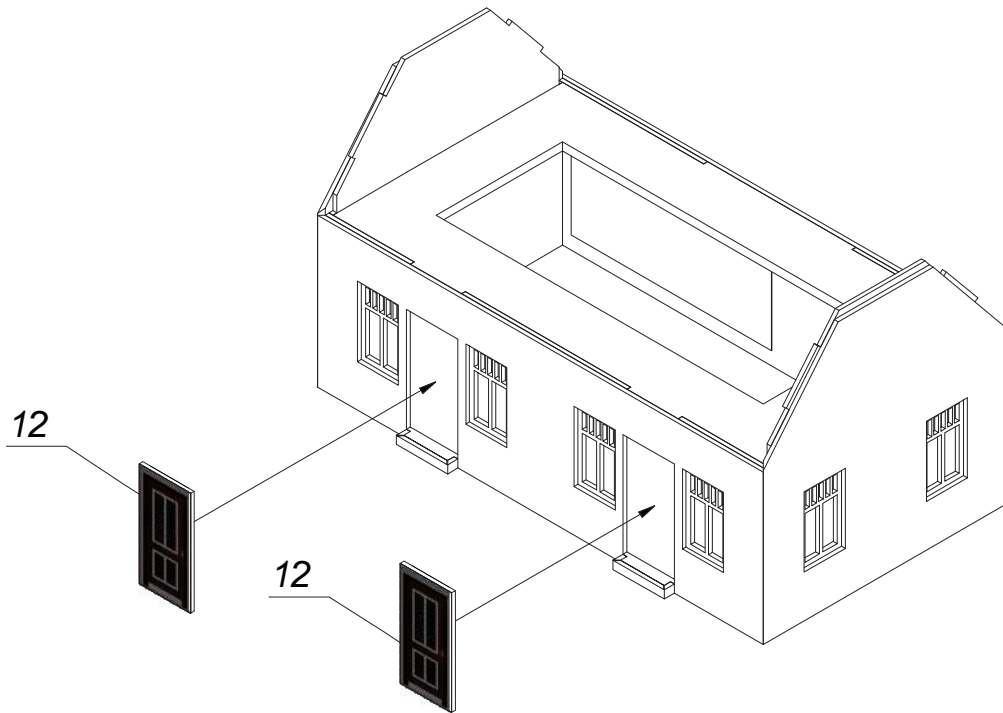
6.



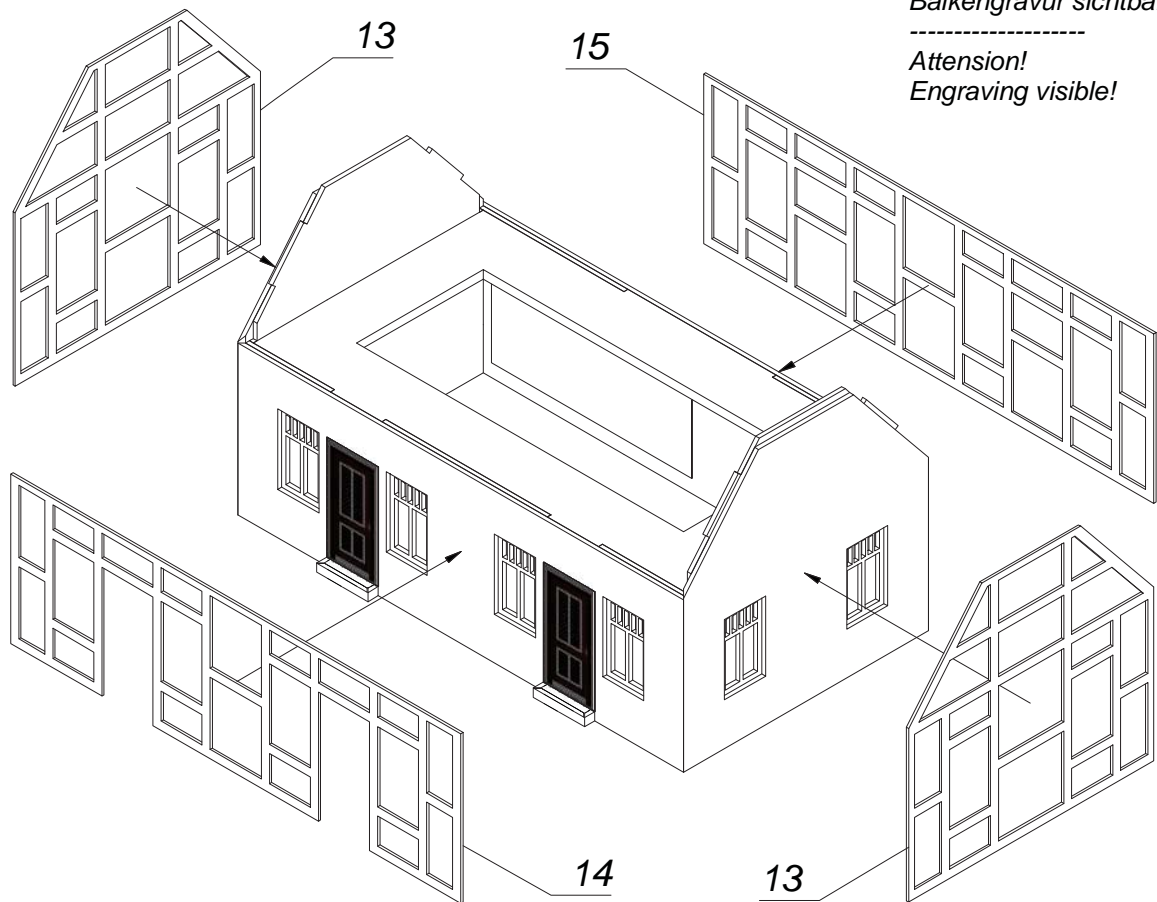
7.



8.



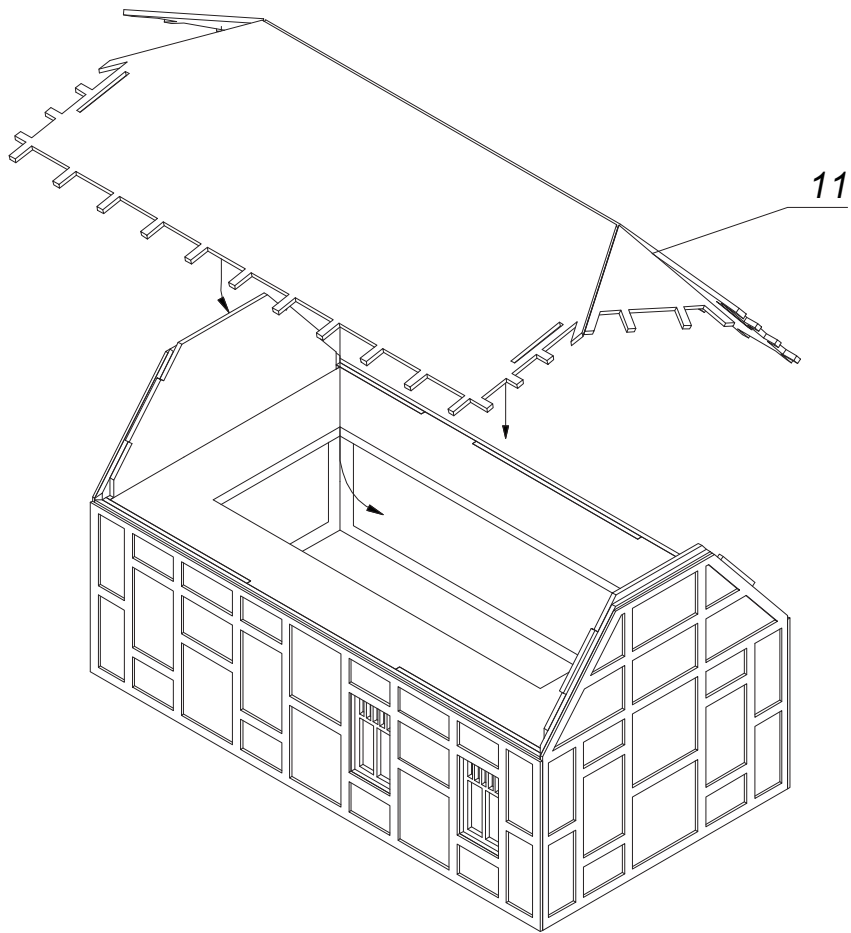
9.



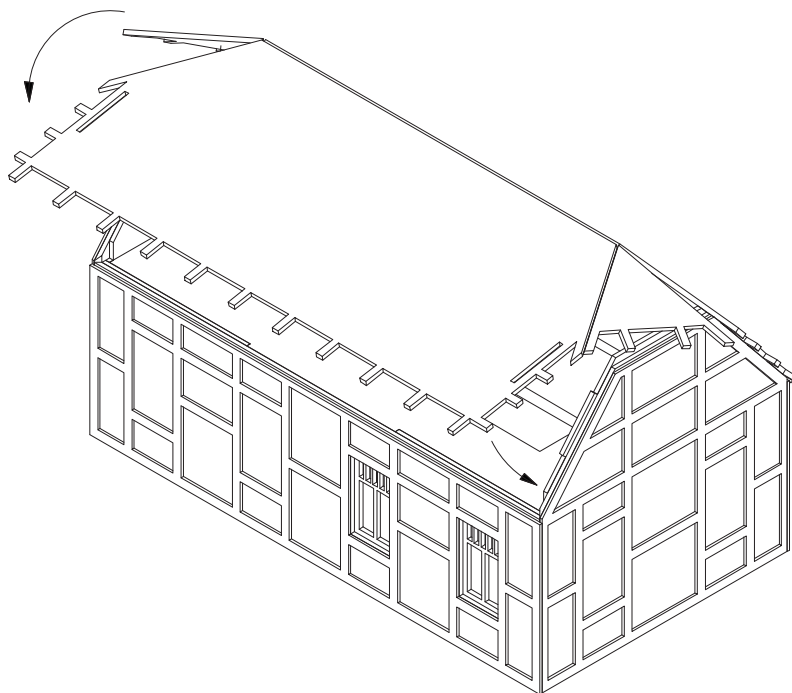
Achtung!
Balkengravur sichtbar!

Attention!
Engraving visible!

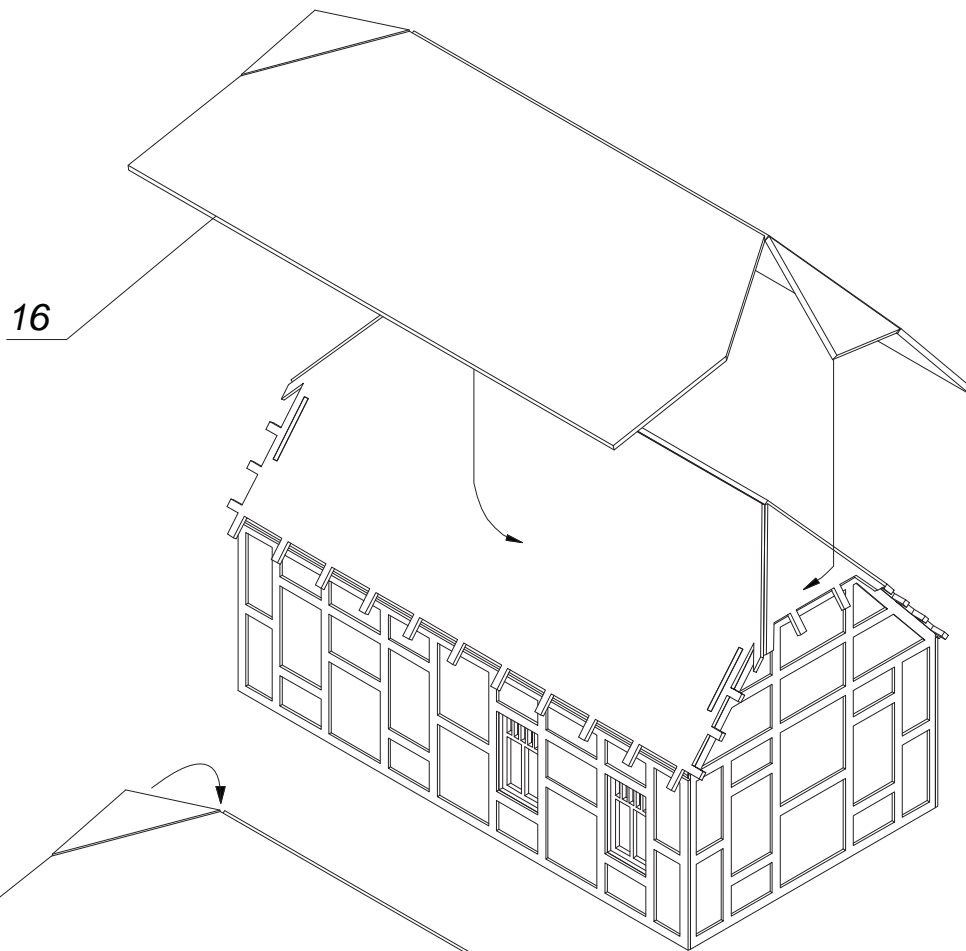
10.



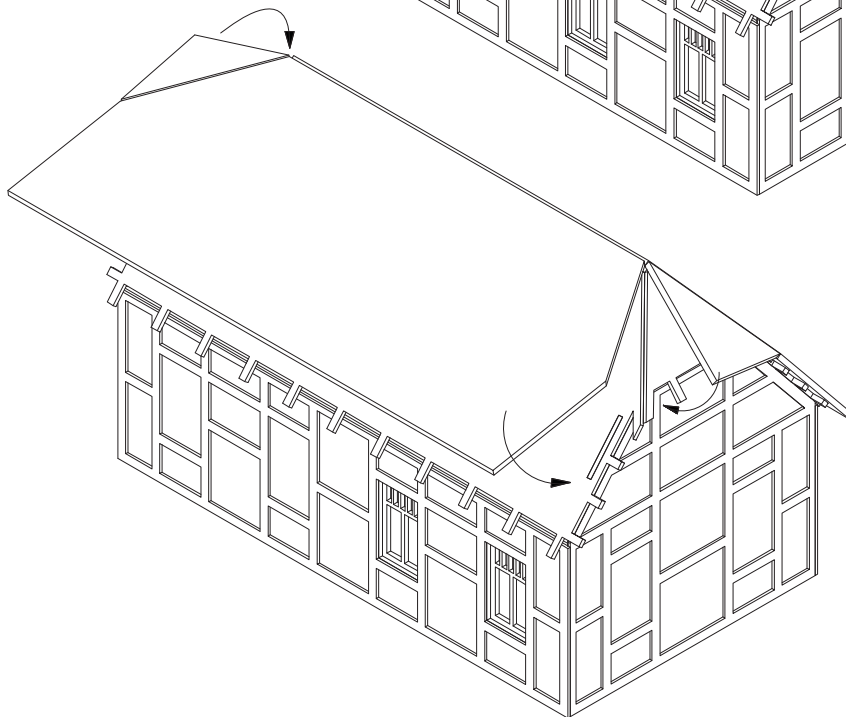
11.



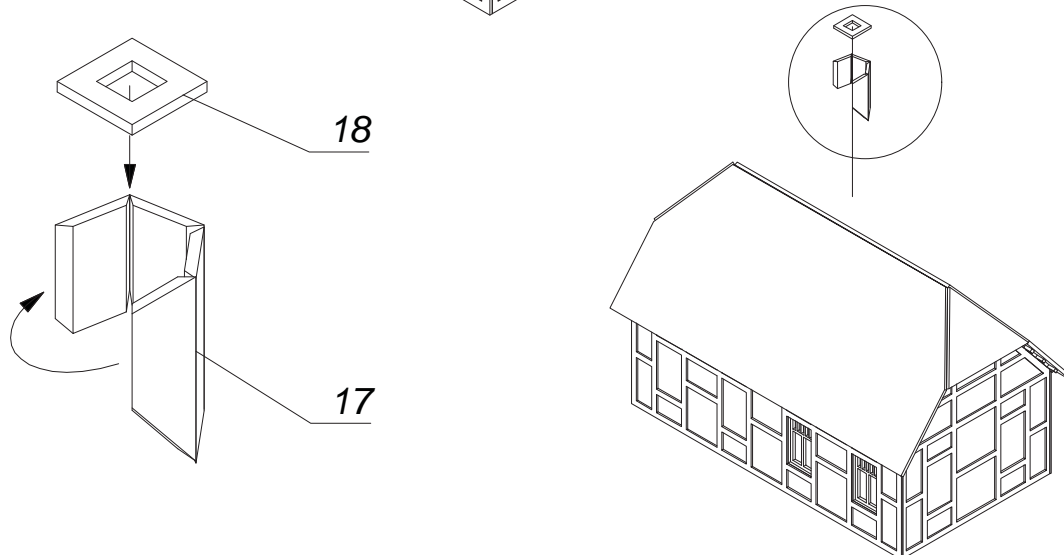
12.



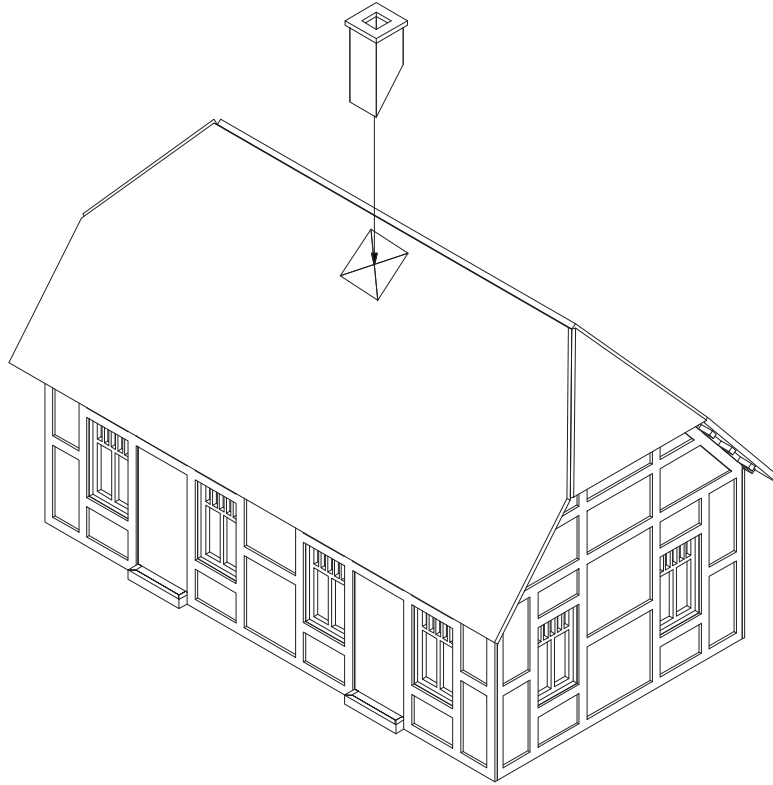
13.



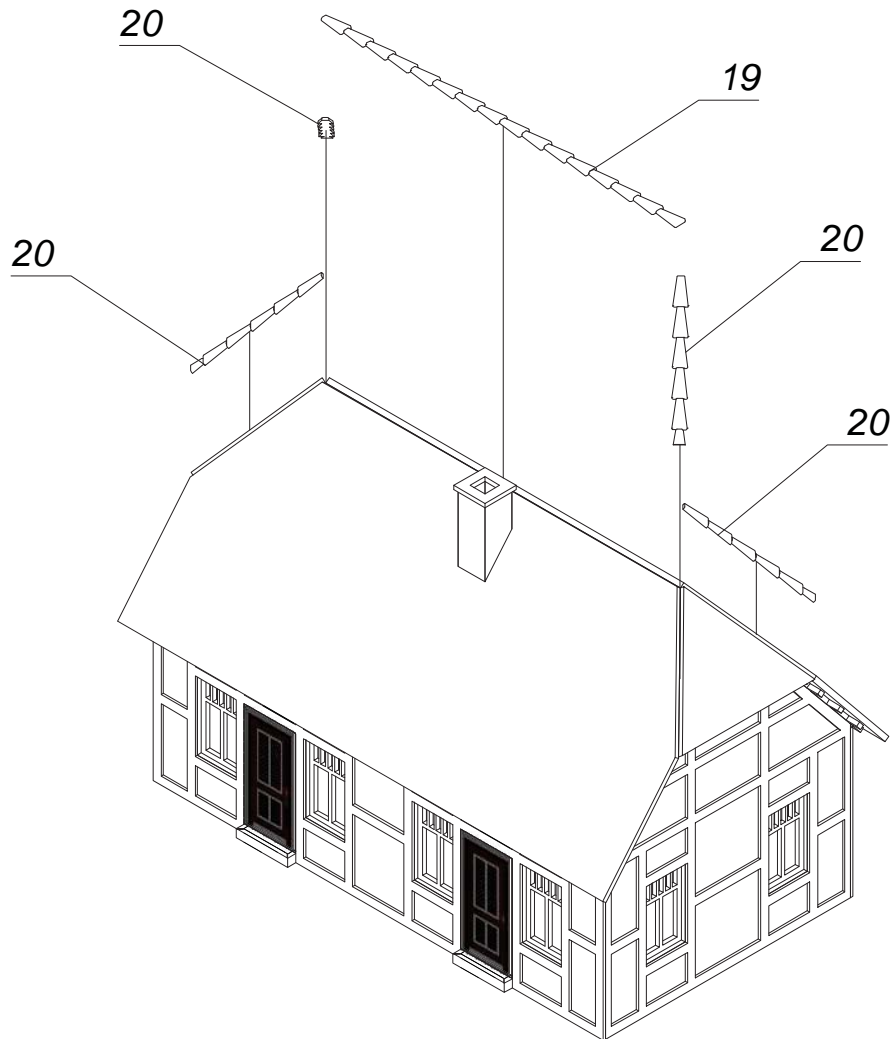
14.



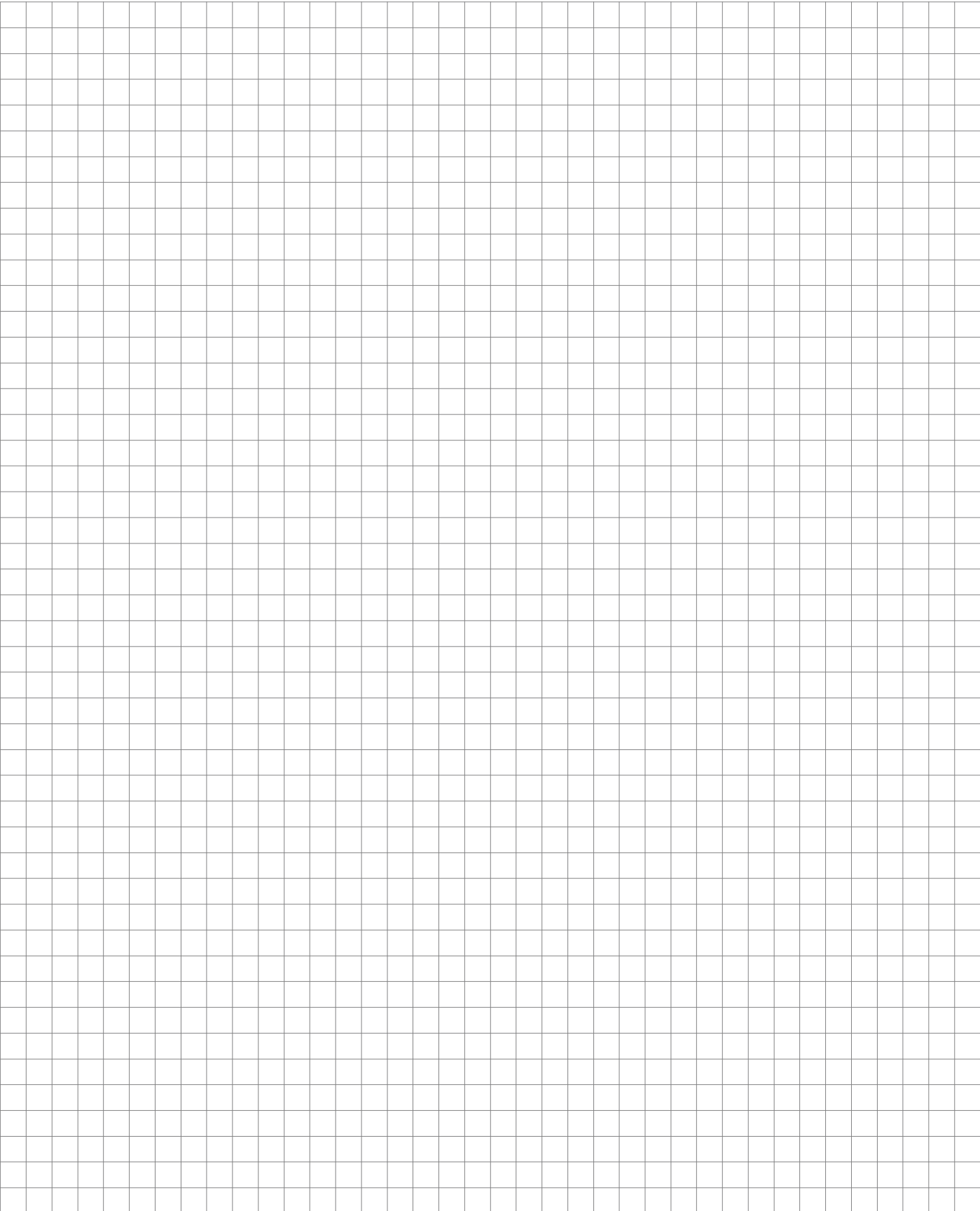
15.



16.



Platz für Ihre Notizen:
Space for your notes:





... wie im Original

Ebenfalls erhältlich / Also available:



N **63600** *Laser-Cut Bausatz Wohnhaus*
Laser-Cut Kit Residential House



N **63406** *Laser-Cut Bausatz Werkstatt*
Laser-Cut Kit Workshop